

The Antique Pattern Library

For more information, please see our website at:

<http://www.antiquepatternlibrary.org>



This is a scan of an antique book that is, to the best of our knowledge, in the public domain. The scan itself has been photo-edited for readability, and is licensed under the **Creative Commons** Attribution-NonCommercial-ShareAlike License. To view a copy of this license, visit <http://creativecommons.org/licenses/by-nc-sa/2.5/> or send a letter to Creative Commons, 559 Nathan Abbott Way, Stanford, California 94305, USA.

You may share copies or printouts of this scan freely. You may not sell copies or printouts.

Donated by

Judith Combs 2006mar





THE
CROCHET BOOK,

EIGHTEENTH SERIES,

{ For Cluny, Guipure d'Art, and Maltese Laces.

M^LLE. RIEGO DE LA BRANCHARDIERE.

BY APPOINTMENT TO H. R. H. THE PRINCESS OF WALES.

PRICE ONE SHILLING.

LONDON: SIMPKIN, MARSHALL, AND CO
OF THE AUTHORESS, 288, OXFORD STREET;
AND ALL THE BERLIN WAREHOUSES.

1869.

{ Entered at Stationers' Hall]

{ The Author reserves the right of Translation. }



Needlework Establishment,

238, OXFORD STREET, W.

Near the Marble Arch.

M^{LE}. RIEGO DE LA BRANCHARDIERE having reason to believe that there has been a recent infringement and use of her name, she must caution Ladies against purchasing any of her registered or copyright Designs unless they are signed with her surname in full, as she is informed by law it is against the purchaser as well as the person infringing that she must proceed in case it is necessary to assert her rights.

BY APPOINTMENT
TO H.R.H.

THE PRINCESS OF WALES.

The ONLY Establishment authorised by M^{LE}. RIEGO to use her name for the sale of her Various Works, is at the above address.

	s.	d.		s.	d.
The Instruction Tatting Book	1	0	Andalusian Knitting & Netting	1	0
The Exhibition Tatting Book	1	0	Coloured Antimacassars ..	1	0
The Royal Tatting Book ..	1	0	La Mode Winter	0	6
The Lace Tatting Book ..	1	0	The Book of Siberian Wool	0	6
The Etoile Tatting Book ..	1	0	The Child's Winter Knitting	0	6
The Pearl Tatting Book ..	1	0	The Abergeldie Winter Book	1	0
The Raised Tatting Book ..	1	0	The 18th Series Crochet Book	1	0
The Simple Tatting Book ..	0	6	The 10th, 15th, & 17th Series	1	6
Tatting Edgings	0	6	The 2nd, 5th, and 6th Series	1	0
The Useful Knitting Book ..	1	0	The 7th, 14th, and 16th Series	1	0
Winter Book for 1862. . . .	1	0	The Guipure Netting Book ..	1	0
Ecosais "Tricot"	1	0	The Point Lace Instructor ..	10	6
"Melange de Laine"	1	0	The Point Lace Instructor ..	3	6



Prize Medal, 1851.



Prize Medal, 1862.



Prize Medal, 1862.

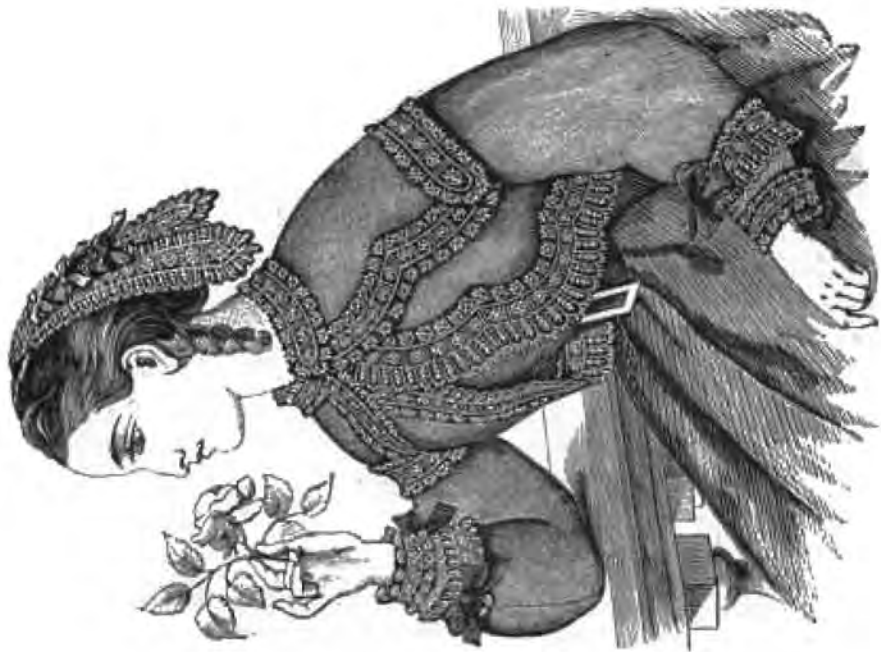


Prize Medal, 1855.

A W A R D E D

"FOR THE SKILL DISPLAYED IN THE IMITATION OF OLD SPANISH AND OTHER COSTLY LACES."

SEE JURORS' REPORT, INTERNATIONAL EXHIBITION



THE CROCHET - BOOK.

EIGHTEENTH SERIES.



INTRODUCTION.

For some time past the most fashionable Laces have been those which resemble the ancient style; the latest revival being the geometrical Greek patterns, now called Cluny and Guipure d'Art, which are used in Paris for every article of Dress or Furniture on which Lace can be introduced.

Having so long made Lace my especial study I am well acquainted with the Old Greek patterns, and as these Trimmings are expensive and in great demand, consider that all who take an interest in Needlework will find pleasure in reproducing them; I have therefore by an entirely new arrangement of Crochet preserved the character of the real Lace, the effect of which can be so successfully given by this Modern Art.

As the Designs in this Book can be used for many purposes, I have shewn in the Frontispiece a Jacket and Lappet formed with them; for the latter, directions are given at page 20. The Jacket is of silk or velvet, trimmed with bands of the "Cluny Insertion," laid on the material, which is edged on the upper side with the "Narrow Guipure d'Art;" on the other side the "Maltese pattern" is attached to the edge. The "Vandyke Cluny Lace" is also specially suited for laying on silk, velvet, or satin, each point being fastened with a large bead.

All these patterns can be worked with Black Maltese Silk, coarse or fine, according to whether they are used for Dress or Mantle Trimmings; and as the Greek style is the only Lace at present admitted in the English Church, are also suited for that purpose; and when worked with coarse cotton, are adapted for trimming the velvet now so much used for articles of furniture.

CLUNY LACE BORDER.

Materials—For Fine Lace to ornament Dresses, Caps, Bonnets, &c., use Walter Evans & Co.'s Boar's-head Crochet Cotton Nos. 20 and 24 (two sizes being required for the pattern); Walker's Uncotopic Needle No. 4½. This will make a Lace 3½ inches deep.

For a Lace 5 inches deep, use Boar's-head Cotton Nos. 14 and 18; Needle No. 4.

For Mantelpieces, Brackets, Sofa Pillows, and other Furniture Lace, use Cotton Nos. 8 and 10 Needle No. 3.

For Fine Linen Lace, use Walter Evans & Co.'s Mecklenburgh Thread Nos. 6 and 10; or Coarser, Nos. 2 and 4.

THE STARS.

The BEADING.—Commence with the fine thread, make 9 chain, turn, miss the last 6 chain and work 1 treble in the 3rd stitch of the chain; then 1 chain, miss 1, and 1 treble in the 1st chain stitch.

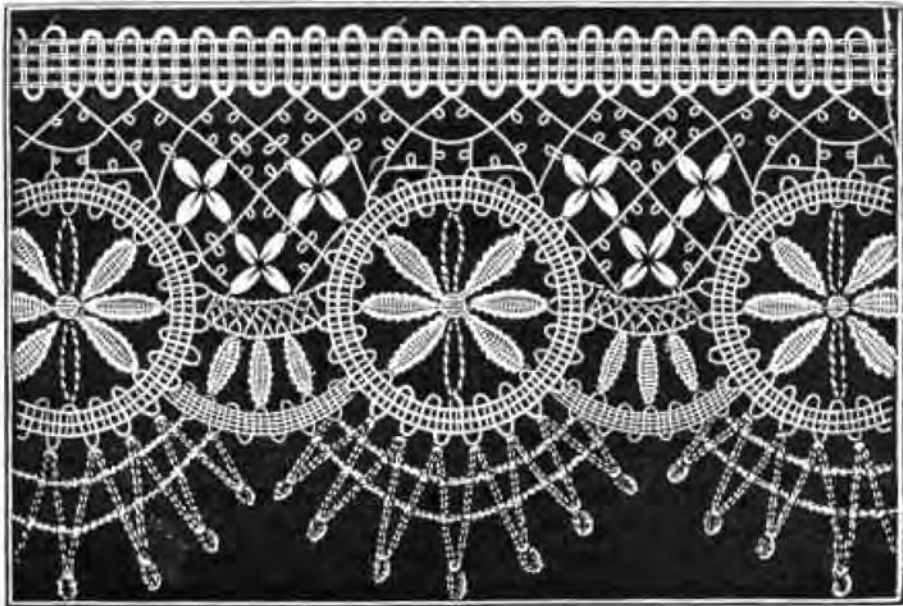
* Turn back, that is, on the wrong side; make 6 chain and work 1 plain on the top of the last treble stitch; 1 chain, miss 1 and 1 treble on the next treble stitch. Turn back. Make 6 chain and work 1 treble on the last treble; then 1 chain, miss 1 and 1 treble on the plain stitch. Repeat from * until 47 loops or Points are made, counting both sides of the beading.

As the plain stitches are to contract one edge of the beading, care must be taken that they are always worked tightly and on the same side. The needle should be put into both edges of the previous stitches, so as to take up more than one thread, and keep them firm.

The 47 Points form the circle round the Star. When they are made keep the last Point to the left.

The STAR—Make 19 chain, and for the foundation round, miss the last 5 chain and work 1 single in the next stitch, leaving 13 chain; turn so as to cross it.

OLUNY LACE BORDER.



1st round—(Work 2 plain, both in a chain stitch of the foundation round, 4 times); 1 single; keep the beading to the right.

2nd round—For the 1st Division—make 12 chain, join to the third Point of the Beading, counting from the 18 chain, always leaving 2 Points unattached on the narrow side; then on the 12 chain, miss 1, 1 plain, 1 treble, 5 long, 1 treble, 1 plain, 2 single, and 1 single on the 1st round.

2nd and 3rd Divisions—Work 2 more the same as the 1st Division; when finished make 12 chain, join to the 3rd Point of the Beading; then 11 chain and 1 single on the 1st stitch of the 12 chain; 1 single on the 1st round.

Work three Divisions more as the 1st Division.

Then to finish the Star, work 1 single on the last stitch of the 18 chain; make 10 chain, 1 single on the 3rd stitch of the 18 chain; then 2 chain, join to the 1st stitch of the Beading to make it round; 1 plain on the last treble, join to the opposite side, 1 single, and fasten off.

Repeat this Star.

THE EDGING.

The coarser cotton is now to be used, and as it is worked with the same needle, the stitches will be tighter and firmer than the other part.

Take a Star and work 2 plain in the 4th point of it, counting to the *right* of the fastening off; then make 23 chain, and on these chain miss the last 6 and work 1 plain in the next stitch; 5 chain, miss 5, 1 long, 5 chain again, miss 5, 1 long, which leaves 4 stitches of the chain; then 4 chain 2 plain in the next point of the Star; turn back.

▪ Make 4 chain, and work 1 plain on the last long stitch; 5 chain, miss 5, 1 treble on the next long stitch; turn back. Make 12 chain, miss the last six and work 1 plain in the next; then 5 chain, 1 long on the last treble stitch; 5 chain, miss 5, 1 long on the plain stitch; 4 chain, and 2 plain in the next Point; turn back.

Repeat from * 5 times more; seven Divisions will now be made, the centre one being over the loop of chain in the Star; this will attach 8 Points of the Star.

The BEADING—Keep the edge to the left, make 6 chain, and work 1 treble and 1 plain, both in the last stitch of the 2 plain; turn back; 3 chain, join to the next long stitch of the edge; 3 chain, and on the last plain stitch work 1 treble and 1 plain; turn back. Then 6 chain, 1 treble and 1 plain both on the last stitch, turn back; 3 chain, join to the next long stitch; 3 chain, 1 treble and 1 plain on the last stitch, turn back; then (6 chain, 1 treble and 1 plain on the last stitch, and turn back, 9 times). To continue the Edge, keep the last Point to the left; take a Star and work 2 plain in the 4th Point of it, counting to the right as before; 5 chain, join to the last Point of the Beading on the right side; 6 chain, join to the next Point; 12 chain, miss the last 6 and work 1 plain in the next; 5 chain, miss 5, 1 long; 5 chain again, miss 5, 1 long; 4 chain, 2 plain in the next Point of the Star; turn back.

Repeat from *, page 8, in the Edging.

THE LATTICE PATTERN.

Take the 1st Star, on the wrong side of the Crochet, and using the fine cotton, work 2 plain in the 8th Point of it, counting from the edging; that will leave 8 Points to the left.

Make a Double Bar, thus—9 chain, miss the last 5 and work 1 single in the 4th stitch of the 9 chain; then 9 chain, and 1 single in the 4th stitch; then 3 chain, which finishes the bar. Work 2 plain in the 9th Point of the Star; ** make a 2nd Double Bar, and missing a Point work 2 plain in the 11th Point; 3 chain, 2 plain in the 12th Point; and to form half the small cross, make (4 chain, and work 2 treble, both in the 1st stitch of these 4 chain; 4 chain again, 2 treble in the 1st stitch of it); then 5 chain, 2 plain in the 13th Point; 6 chain, 2 plain in the 14th Point; 3 chain, 2 plain in the 15th Point. Turn the work on the right side.

- 1st Division—12 chain, join to the 2nd Point of the Beading *between* the Stars; then on the 12 chain, miss 1, 1 plain, 5 treble, 1 plain, 1 single, which leaves 3 chain.
- Make 2 Divisions more the same. Then 3 chain, join to the next Star at the next Point but one from the Edging. 1st row—Then in the last 3 chain, (work 3 chain and 1 plain, twice); 3 chain, 1 plain in the 3 chain between the 2nd and 3rd Divisions; 3 chain, 1 plain between the 1st and 2nd Divisions; (then 3 chain and 1 plain twice in the 1st 3 chain); miss 2, 1 plain in the 3 chain at the side; turn back.
- 2nd row—(2 chain, miss 3, and 1 plain in the 3 chain of the last row, 6 times); then 2 plain in the next Point of the Star; turn back.
- 3rd row—1 plain in the last 2 chain, then (1 chain, miss 3, and 1 plain in the 2 chain, 5 times); 1 plain in the 6 chain at the side.
- 4th row—Miss 2, 1 plain in the 1 chain, miss 1, 1 plain in the next 1 chain; (then 4 chain and 2 treble in the 1st stitch of the 4 chain, twice); and on the last row miss 3 and work 2 plain, then 4 chain, 2 plain in the next Point of the star; turn back.
- 5th row—8 chain, 2 treble in the 5th stitch of these 8 chain; then 1 plain between the treble stitches of the last row; 4 chain, 2 treble in the 1st stitch of it; then 2 plain in the 5 chain nearest the treble stitches at the side; turn back.
- 6th row—Work a Double Bar as before; miss the cross, and work 2 plain in the 4 chain; then (4 chain and 2 treble in the 1st stitch of it, twice); 2 plain in the next Point; 3 chain, 2 plain in the next Point; turn back.
- 7th row—(9 chain, and 1 single in the 4th stitch, twice); 4 chain, and 2 treble in the 1st stitch of it; 1 plain between the treble stitches of the last row; 4 chain and 2 treble in the 1st stitch. Work a Bar, by making 1 dot and 3 chain after it; then 2 plain in the centre of the Double bar; work a Bar; 7 chain, and 2 treble in the 4th stitch of the 7 chain, 1 plain between the treble

stitches; 4 chain and 2 treble in the 1st stitch; then 2 plain in the centre of the double bar at the side; turn back.

8th row—Work a Double Bar, then 2 plain in the 3 chain after the treble stitches. Work a 2nd Double Bar, miss 2 dots, 2 plain in the next 3 chain; work a 3rd Double Bar, 2 plain in the centre of the next double bar. Work a Bar, and missing a Point of the Star, work 2 plain in the next but one. Work a Double Bar, 2 plain in the next Point. Repeat from ** in the Lattice Pattern.

The BROAD BEADING—Commence with the fine cotton, make 13 chain. 1st row—Turn, miss the last 6 chain and work 1 treble; then on the remaining chain (work 1 chain, miss 1, and 1 treble, 3 times); turn back.

2nd row—Make 6 chain, 1 treble on the last treble stitch; then (1 chain, miss 1 and 1 treble 3 times), always working the treble stitches on the top of those in the previous row; turn back.

Repeat the 2nd row until sufficient length is made.

The JOINING—Commence by working 2 plain in the 1st Point of the Beading, then 8 chain 1 single in the 3rd stitch of it; 2 chain, join to the 1st dot of the Double Bar over the centre of the 1st Star; 5 chain, 2 plain in the 3rd Point of the Beading; 5 chain, join to the 1st dot of the same Double Bar; 9 chain, 1 single in the 4th stitch of it; 2 chain, 2 plain in the 5th Point; * 8 chain, 1 single in the 3rd stitch; 4 chain, and missing 2 dots join to the centre of the next Double Bar, miss 1, 2 single on the 4 chain; 8 chain, 1 single in the 3rd stitch; 2 chain 2 plain in the next Point but one. Repeat from * twice more.

Then work from the commencement of the Joining until it is all attached.

MALTESE EDGING.

Materials—For a Fine Lace, $1\frac{1}{2}$ inches deep, use Walter Evans & Co.'s Boar's-head Crochet Cotton Nos. 24 or 30; Walker's Uncotopic Needle No. $4\frac{1}{2}$. For a Coarser size, Cotton Nos. 14 or 16; Needle No. 4. For Furniture Lace, Cotton No. 10.

The BEADING—Commence with 7 chain, turn, and miss 6 chain, work 2 treble both in the 1st stitch; turn back, that is, on the contrary side. Make 6 chain and work 2 treble, both on the wrong side of the last treble stitch; turn back. Continue working 6 chain and 2 treble as before, until sufficient length is made. The loops of 6 chain at the edges form the Points, and it will require 12 Points on each side for every scallop of the lace. In working the treble stitch, care must be taken to put the needle into both edges of the previous stitches, to make the work firm.

THE FIRST SCALLOP.

Commence in the 1st Point of the Beading, keeping the rest of it to the right.

1st LEAF—Make 19 chain, join to the centre of the next Point of the Beading to the right, always making the joinings at the same side; then on the 19 chain, miss 1, 1 plain, 4 treble, 1 plain, and 1 single, which finishes the leaf and leaves 11 chain.

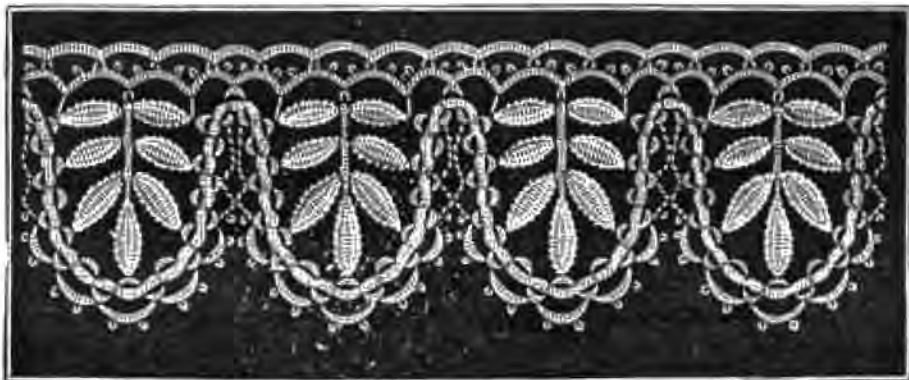
2nd LEAF—Make 11 chain, join to the 4th or next Point but one; then on the 11 chain work a Leaf as before; leaving 8 chain.

3rd LEAF—Make 10 chain, join to the 6th Point; then work a Leaf as before; when finished, work 2 single more on the 2 chain.

4th LEAF—Make 8 chain, join to the 8th Point; work a Leaf as before; when finished, 3 single on the 3 chain between the leaves.

5th LEAF.—Make 8 chain, join to the 10th Point; work a Leaf, then 3 single on the 11 chain.

6th LEAF.—8 chain, join to the next or 11th Point; work a Leaf; then 6 chain, 1 single on the 1st stitch of these 6 chain; and on the 8 chain left, to form the 7th Leaf, work 1 single, 1 plain, 4 treble, 1 plain, 1 single.



Turn the work on the wrong side. Make a Double Bar, thus—8 chain, and 1 plain in the 3rd stitch of it to form a dot, leaving 2 chain; then 8 chain again and 1 plain in the 3rd stitch for a 2nd dot; then 2 chain, which ends the Double Bar. Work 2 plain in the 6 chain between the leaves. Make a 2nd Double Bar, and work 1 treble in the next Point of the Beading already attached to the leaf. Make a 3rd Double Bar, 2 plain in the next Point. Make a 4th Double Bar, 2 plain in the next Point. Turn the work on the right side, and commence again at the 1st Leaf. Repeat the Leaves, except that after the 7th leaf is made, 3 single should be worked on the 2 plain and next chain stitch.

THE EDGING—Commence in the 3rd Point, on the outer side of the Beading. Work a Double Bar as before, then 1 plain in the next Point. Make 4 Double Bars more the same, working a plain stitch in the next Point after each bar. When the 5 Bars are worked, make 8 chain and 1 plain in the 3rd stitch of it as before; then 6 chain, 1 plain in the 7th Point; 3 chain, 1 extra long in the 9th Point, then another extra long in the 11th Point; 3 chain, 1 plain in the 12th Point; 3 chain, join to the 6 chain after the last dot; then 9 chain, and 1 plain in the 4th stitch of it; 2 chain, 1 plain in the next Point. Repeat from commencement of the Edging.

The HEADING, 1st row—Work 6 chain and 2 treble, both in the centre of each double bar.

2nd row—Miss 2, and work 6 plain, in each loop of chain.

~~~~~

## NARROW CLUNY EDGING.

*Materials*—To make an Edging  $1\frac{1}{2}$  inches deep, use *Walter Evans and Co.'s Boar's-head Crochet Cotton No. 24*; *Walker's Uncotopic Needle No. 4 $\frac{1}{2}$* .

*For Coarser or Finer, see "Maltese Edging."*

**1st VANDYKE**—1st or centre row—Commence by making 18 chain, and for the 1st Dot, turn, miss the last 6 chain and work 1 plain in the 7th stitch; then 1 treble in the next stitch, leaving 10 chain; and for

**The 2nd Dot**—Make 9 chain, turn, and on these 9 chain, miss 6 and work 1 plain and 1 treble, which leaves 1 chain.

Work 3 Dots more as the 2nd Dot; when finished, work 1 treble stitch on the 1 chain between the 2nd and 3rd Dots; and for the 6th Dot, make 8 chain, turn, miss 6, 1 plain and 1 treble as before; then 1 treble on the 1 chain between the 1st and 2nd Dots; and for the 7th Dot, make 8 chain, turn, miss 6, and work 1 plain and 1 treble; then 1 treble on the last stitch of the 10 chain left at the commencement; turn back, placing the work on the wrong side.

2nd row—Make 12 chain, work 1 plain in the loop of chain of the last dot but one; then 10 chain, 1 plain in the centre dot; 11 chain, 1 plain in the centre dot again; then 10 chain, 1 plain in the 2nd dot; make 7 chain, and turn back. Join the last stitch of the 7 chain to the 5th stitch of the 9 chain left at the commencement.

3rd row—Work 6 plain in the 7 chain; make 5 chain, miss 1, and work 3 plain in the 10 chain; and for a Dot, make 6 chain and work 1 single in the 1st stitch of the 6 chain; then 2 plain



in the 10 chain; work a 2nd Dot as the last, and 2 plain in the 10 chain; make a 3rd Dot, and work 2 plain in the 11 chain, then in the same loop of 11 chain, work (9 chain and 2 plain, 5 times); make a 4th Dot as before, and in the 10 chain work 2 plain; then a 5th Dot, and 2 plain again; make a 6th Dot, and work 3 plain more in the 10 chain; make 5 chain, and in the 12 chain work 6 plain; 1 single on the 5th stitch of the 12 chain, which finishes the Vandyke.

2nd VANDYKE—For the centre row, make 18 chain, and work as the 1st Vandyke to the 5 chain marked in italic, and instead make only 3 chain; join to the opposite 5 chain; then 2 chain, and in the 10 chain work 3 plain; finish the Vandyke as before; repeat until the length is made.

The HEADING—Make 5 chain, and work 2 plain in each space of chain of the foundation.



## CLUNY LACE INSERTION.

*Materials*—For a Lappet, Fine Lace, &c., 2 inches deep, use Walter Evans & Co.'s Boar's-head Crochet Cotton Nos. 24 or 30; Walker's Uncotopic Needle No. 4½. For a Coarser size, Cotton Nos. 12 or 14; Needle No. 4. For Furniture Lace, Cotton No. 10.

## THE MEDALLIONS.

The BEADING—Commence with 7 chain, turn, and miss 6 chain, work 1 treble and 1 plain, both in the 1st stitch; turn back, that is, on the contrary side. \* Make 6 chain, and work 1 treble and 1 plain, both on the wrong side of the last plain stitch, turn back. The loops of 6 chain at the edges form the Points. Care must be taken to put the needle into both edges of the previous stitch, to make the work firm.

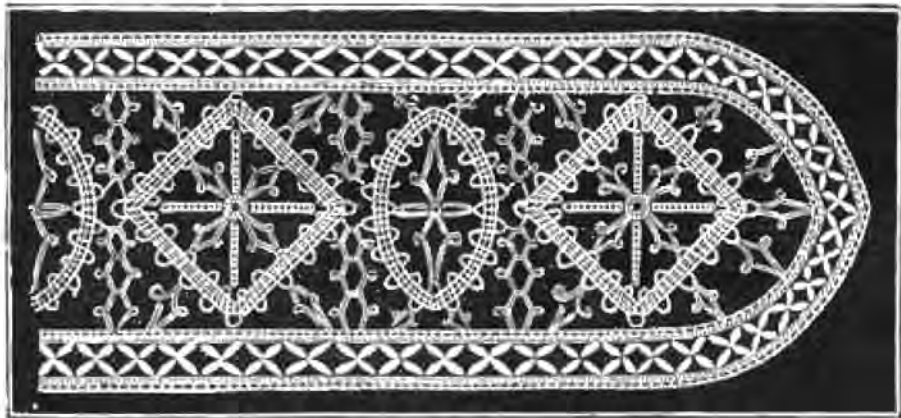
Repeat from \* until 31 Points are made, counting both sides; turn back so as to keep the last point to the left, and for

The CENTRE—Make 19 chain, miss the last 5 chain and work 1 single on the 18 chain, which forms a dot and leaves 13 chain. Throughout this pattern a Dot is always formed by missing the last 5 chain and working 1 single in the next chain stitch. Work 4 chain, miss the last 3 points of the Beading and join to the 4th Point, always counting only one side of the beading, and putting the needle into the centre chain stitch of the point; then 9 chain, work a Dot; 4 chain, then 1 single in the 9th stitch of the 13 chain.

Make 5 chain, and missing 3 points, join to the 4th Point, counting from the last joining; then 4 chain and 1 single in the 1st stitch of the 5 chain.

Make 11 chain, work a Dot, leaving 5 chain, then 4 chain, miss 3 points, and join to the 4th Point; make 10 chain, work a Dot; then 4 chain, 1 single in the 1st stitch of the 5 chain left.

Then on the 8 chain left at the commencement work 1 single, 4 chain, miss 4, 1 single, which leaves 2 chain; and to make the Beading round, work 3 chain, join to the 1st stitch of the beading; then 1 treble and 1 plain on the last plain stitch of the beading as usual; join again to the 1st stitch, 1 single; fasten off, knotting the two ends together; the threads should be left as a guide for the joining.



#### THE DIAMONDS.

The BEADING—Work 39 Points of the Beading as before, counting both sides; then for  
The CENTRE—Turn back, so as to keep the last Point to the left; make 3 chain, and join to the nearest or 38th Point; make 15 chain, and for the foundation round, turn, miss the last 5 chain



and work 1 single in the next, which leaves 9 chain; turn so as to cross, and keeping the beading to the right, work 1 plain in the foundation round.

- \* Make a Dotted Bar, thus—9 chain, work a Dot; 3 chain, join to the next Point but one of the beading, always counting from the last one attached; then 8 chain, work a Dot; 3 chain, 1 single on the top of the last plain stitch, and 1 plain in the foundation round.

Make 10 chain, join to the next Point but one; then join again to the next Point, so that the two points are brought close together; then down the 10 chain, miss 1, 9 single, and 1 plain in the foundation.

Repeat from \* twice more; then make a 4th Dotted Bar as before, and up the 1st 9 chain work 9 single; then make the Beading round, and fasten off the same as the Medallions.

Work as many of these Medallions and Diamonds as are required.

#### THE LATTICE INSERTION.

This Insertion requires a foundation chain the length of one side of the lace, but as it is better to measure it after the first row is worked, the cotton may be left when any length of chain stitches are made, using a second thread for the 1st row, to form which work as follows:—

1st row—Commence in the 1st stitch of the foundation, work 6 chain, then miss 3 of the foundation stitches and work an extra long stitch on it; make 3 chain, and for the Lattice-stitch, which is formed similar to an extra long stitch, work thus—“turn the cotton round the needle, and putting it into the centre of the extra long stitch bring the cotton through in a loop, when there will be three turns or loops on the needle; turn the thread round the needle once more to make four turns, and missing 3 stitches, put the needle into the 4th stitch of the foundation chain, bring the cotton through, (take up the cotton and bring it through two of the loops on the needle 4 times), which will leave the one loop as usual.”

\* Make 1 chain, and on the foundation, miss 1 and work an extra long stitch; 3 chain, work a Lattice-stitch as before. Repeat from \* to the end.

2nd row—Commence in the 1st 3 chain of the foundation chain, work 3 plain in it, miss 1 and in the 1 chain work 2 plain; repeat to the end, working 3 plain and 2 plain alternately in each space. The plain row on the opposite side is worked in the Joining.

#### THE JOINING.

Commence in the 1st 3 chain of the Insertion, and work 2 plain in it.

\* Then for a Dotted Bar, make 9 chain, work a Dot, leaving 3 chain; then 3 chain, take a Diamond and join to the 3rd point of it, counting to the left where it was fastened off; then 9 chain, work a Dot; 2 chain, 1 single in the 1st chain stitch of the 1st bar, which finishes it; then on the Insertion, 1 plain in the same 3 chain as before.

The stitches on the Insertion are always made to correspond with the other side: that is, 3 plain in the 3 chain, and 2 plain in the 1 chain.

Work 3 plain more on the Insertion, as before directed; join to the next point but one of the Diamond, this point forms one of the angles of it; then on the Insertion, 2 plain in the same 3 chain as the 1 plain, and 8 plain more as before. Then make a 2nd Dotted Bar, joining it to the next point but one of the Diamond; when finished, work on the Insertion 2 plain in the same 3 chain, and 3 plain more.

For the 1st Long Bar, make 8 chain, work a Dot; 9 chain, work a Dot; 9 chain, miss 2 points of the Diamond and join to the 3rd Point; miss 1 and 2 single on the 9 chain; then 2 chain, take a Medallion and join to the 1st point of it, which is to the right of the fastening off; 3 chain, 1 treble in the 3rd chain stitch after the last dot; then 8 chain, work a Dot; 1 chain, 1 treble on the 3 chain between the 2 dots; 7 chain, work a Dot; 2 chain; then on the Insertion, 2 plain in the same 3 chain, and 4 plain more.

For the small Dotted Bar, make 8 chain, work a Dot; 2 chain, miss 2 points of the Medallion and join to the 3rd; 7 chain, work a Dot; 1 chain, 1 single on the 1st chain nearest the Insertion, 1 plain in the same 3 chain, 8 plain more.

Work a 2nd small Dotted Bar the same as the last, joining it to the next point of the Medallion; when finished, 2 plain in the same 3 chain of the Insertion; 4 plain more.

For the 2nd Long Bar, make 8 chain, work a Dot; 9 chain, work a Dot; 6 chain, miss 2 points of the Medallion and join to the 3rd; 5 chain, take another Diamond and join to the 1st Point to the left of the fastening off, miss 1 and 2 single on the 5 chain; then 3 chain, 1 treble in the 3rd chain stitch after the last dot; then 8 chain, work a Dot; 1 chain, 1 treble on the 3 chain between the dots; 7 chain, work a Dot; 2 chain, 1 plain in the same 3 chain of the Insertion; 4 plain more, and repeat from the \* at the commencement of the Joining.

Work the other side to correspond. In joining the long bar to the diamond it should be attached to the *same point* as the long bar on the other side.

## THE PRINCESS'S LAPPET.

*Materials*—Walter Evans and Co.'s *Boar's-head Crochet Cotton Nos. 20 or 30; for a Sash, Cotton No. 16.*

For one side of the Lappet make 7 Medallions and 8 Diamonds of the Cluny Lace Insertion; then make about one yard of the Lattice Insertion, and work the Joining as directed in that pattern; and to form the pointed end, as in the engraving, continue it round the last Diamond by working thus—

(2 plain in a space, and 1 plain in the next space, for 6 spaces); then a Dotted Bar as before. Repeat this 3 times; then continue the Joining on the second side, but ending at the last Medallion. The 1st Diamond forms the centre Point for the front of the Lappet.

For the other side work 7 Medallions and 7 Diamonds. Then make the Lattice Insertion and join them as before, but commencing with the Medallion. When both sides are worked attach the 1st Medallion to the 1st Diamond of the other side, and continue joining the Insertion round it to the opposite side.

Make sufficient of the Maltese Lace to go all round, omitting the Heading, and sewing the Double Bars to the Insertion. Three bows of Ribbon with ends attach the two sides together, as shewn in the Frontispiece.

## Y&NDYKE CLUNY LACE.

*Materials*—For a Fine Lace, 2 inches deep, use Walter Evans & Co.'s Boar's-head Crochet Cotton Nos. 20 or 24; Walker's Uncotopic Needle No. 4½. For a Coarser size, Cotton No. 18 or Mecklenburgh Thread No. 8; Needle No. 4.

### FIRST PART.

**THE FIRST SQUARE**, 1st row—Make 13 chain, miss the last 6 of these chain and work 1 plain in the next stitch; then (2 chain, miss 1, and 1 plain, 3 times); turn back.

\* 2nd row—(2 chain, miss 2, and 1 plain in the 2 chain of the last row, 3 times); turn back.

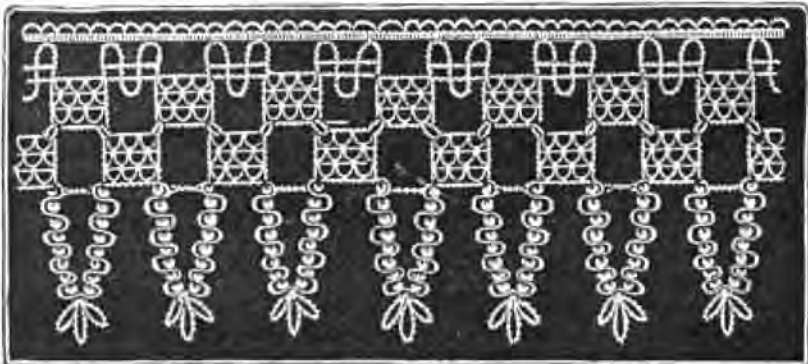
Work 4 rows more the same as the last, turning back at the end of each.

7th row—6 chain, 1 plain on the last plain stitch; then (1 chain, miss 2, and 1 plain in the 2 chain, 3 times); turn back. This finishes the Square.

**THE OPEN PATTERN**, 1st row—Make 9 chain, miss the last 7 of these chain and work 1 treble in the next stitch; 1 chain, miss 1, and 1 treble on the last plain stitch; turn back.



2nd row—7 chain, 1 treble on the last treble; 1 chain, miss 1 and 1 treble on the next treble  
turn back.                      3rd row—Work as the 2nd row.



**THE SECOND SQUARE**, 1st row—Make 12 chain, miss 6, 1 plain; then (2 chain, miss 1, and 1 plain, 3 times), the last stitch will be on the last treble stitch; turn back.

Repeat from \* until the length is made.

**THE HEADING**, 1st row—Commence in the 1st stitch of the 1st Square, make 8 chain, 1 plain in the next loop of the open pattern; 6 chain, 1 plain in the next loop. Repeat.

2nd row—Work 9 plain in the 8 chain, and 6 plain in the 6 chain. Repeat.

3rd row—Work 4 chain, miss 2, 1 plain. Repeat.

SECOND PART.

**FIRST SQUARE**, 1st row—Commence with 6 chain, take the first Square previously worked and join to the 2nd small loop at the top of it, keeping the rest to the right; then on the 6 chain, work (2 chain, miss 1, and 1 plain, 3 times); turn back.

† 2nd row—(2 chain, miss 2, and 1 plain in the 2 chain of last row, 3 times); turn back.

Work 4 rows more as the last. Turn back.

7th row—Join to the loop of chain of the next Square previously worked; then on the last row, (1 chain, miss 2, and 1 plain in the 2 chain, 3 times); and for

**THE VANDYKE**—To form the 1st Point, make 6 chain, and work 1 treble and 1 plain, both on the last plain stitch; turn back. Make 7 Points more the same; and when the 8 Points are worked, keep the last to the right, and for the 3 loops in the centre, make 10 chain, work 1 single in the 1st stitch of these 10 chain; then 15 chain, and 1 single in the 1st stitch of it; 10 chain again, and 1 single in the 1st stitch of it, then 1 treble on the plain stitch of the 8th Point; then 6 chain, work 1 treble and 1 plain in the space formed by the last treble stitch; turn back; 2 chain, join to the 7th Point; 2 chain, and on the last plain stitch work 1 treble and 1 plain; turn back.

Work 5 Points more as the 1st Point, then 7 chain, join to the 1st Point nearest the Square; and on these 7 chain, miss 1, 4 single; then 2 chain, and on the last plain stitch, 1 treble and 1 plain as before.

**THE SECOND SQUARE**—Make 6 chain, join to the loop of chain at the top of the previous Square; and on the 6 chain, (2 chain, miss 1 and 1 plain, 3 times), then 1 single; turn back. Repeat from † to the end.



## GUIPURE D'ART EDGING.

*Materials*—For a Fine Lace, use Walter Evans and Co.'s Boar's-head Crochet Cotton Nos. 20 or 24; Walker's Uncotopic Needle No. 4½. For a Coarser size, Cotton No. 18 or Mecklenburgh Thread No. 8; Needle No. 4.

Commence with 6 chain, miss the last stitch, work 1 plain; then 9 chain, 2 plain in the 1st stitch of the 6 chain; \* and for the Cross make 8 chain and work 2 treble both in the 5th stitch of these 8 chain; then 4 chain and work 2 treble both in the 1st stitch of these 4 chain; make 2



chain, and join to the 6th stitch of the 9 chain to the right; miss 1 and 1 single on the 2 chain; then 9 chain, work 2 treble, both in the 6th stitch of these 9 chain, 1 plain between the treble stitches of the Cross, 4 chain and 2 treble in the 1st stitch of it; 5 chain, 1 plain in the 4 chain to the left; turn back.

(Work in the last 5 chain, 6 chain and 2 plain, 3 times); 9 chain miss the Cross and work 1 plain in the 5 chain to the left; turn back; 9 chain, 2 plain in the centre of the last 9 chain.

Repeat from \* for the required length.

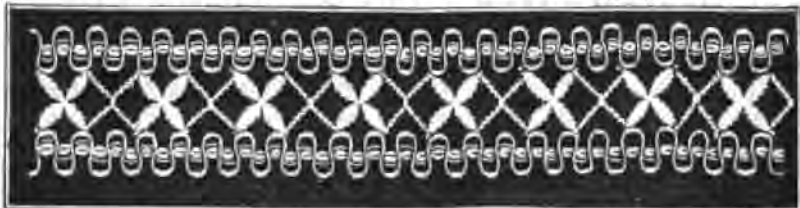
## MALTESE INSERTION.

*Materials—As preceding Pattern.*

This Design is intended for a Riband Velvet to be run under the little cross and over the chain-work. It is suited for Garibaldi Trimmings, Cuffs and Collarette.

The BEADING—Work as the Beading, page 16, making a length sufficient for the Insertion.

When it is finished, commence in the 1st Point and work 2 plain in it; \* make 4 chain, and work 2 treble, both in the 1st stitch of these 4 chain; make 4 chain again, and work 2 treble



both in the 1st stitch of the 4 chain; then 2 plain in the next point of the Beading. Make 9 chain, and missing a Point work 2 plain in the next point but one. Repeat from \* to the end.

Work a second length of the Beading the same as the first.

Commence with 2 plain in the 1st Point, then 4 chain and work 2 treble in the 1st stitch of these 4 chain; then 2 chain, take the first side and join between the treble stitches of it; and on the 2 chain, miss 1, 1 single; make 4 chain and work 2 treble in the 1st stitch of it; 2 plain in the next Point; make 7 chain, join to the centre of the 9 chain; miss 1 and 2 single on the 7 chain; then 4 chain, and missing a Point work 2 plain in the next Point but one. Repeat to the end.

## GUIPURE D'ART BORDER.

*Materials*—For a Fine Lace,  $2\frac{1}{2}$  inches deep, use Walter Evans & Co.'s Boar's-head Crochet Cotton No. 20; Walker's Uncotopic Needle No.  $4\frac{1}{2}$ . For 3 inches deep, Cotton No. 16; Needle No. 4. For Furniture Lace, Cotton Nos. 8 or 12; Needle No.  $2\frac{1}{2}$ .

### THE CENTRE PATTERN.

1st row—Commence with 9 chain, turn, and on these chain, miss 4, 1 plain, 2 chain, miss 1, 1 plain, 2 chain again, miss 1, 1 plain; turn back.

2nd row—2 chain, miss 2, and 1 plain in each 2 chain of the last row, that is, 3 times, turn back.

3rd and 4th rows—Work 2 rows more the same as the last.

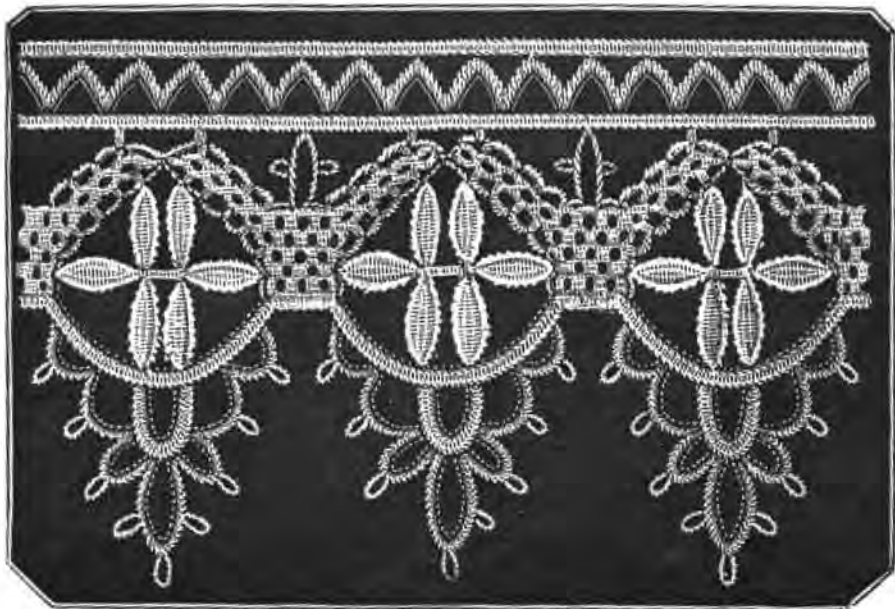
5th row, for the 1st Division—Make 12 chain, turn, and on these 12 chain, miss 4 and work 1 plain, then (2 chain, miss 2, 1 plain, twice), which will leave 1 chain; work 1 chain to correspond and 1 plain in the 2 chain of the last row; then (2 chain, miss 2, and 1 plain in the 2 chain of the last row, twice); turn back.

6th row—Work 1 plain in the last 2 chain, \* and for the Double Bar, make 9 chain and work 1 plain in the 4th stitch of it; 10 chain and 1 plain in the 5th stitch of it; then 3 chain, miss 1, 2 plain in the next 2 chain of the last row; (3 chain, miss 1, and 2 plain in the 2 chain, 3 times); then in the 4 chain at the point, work (3 chain and 2 plain, twice); and down the other side, work (3 chain, miss 1, and 2 plain in the 2 chain, 3 times); then 3 chain and 1 plain in the side of the 4th row, and 1 plain in the side of the 3rd row.

The 1st LEAF—Make 16 chain, and missing the last 3 loops of chain, join to the 4th loop; then on the 16 chain miss 1, and work 1 plain, 4 treble, 1 plain, and 1 single, leaving 8 chain.

2nd LEAF—Make 11 chain, turn, miss 2, 1 plain, 4 treble, 1 plain, 1 single; leaving 2 chain.

GUIPURE D'ART BORDER



3rd LEAF—Make 9 chain and work as the last leaf.

4th LEAF—Make 9 chain and work as the last leaf; when finished, work 2 single on the 2 chain between the 1st and 2nd leaves.

5th LEAF—Make 9 chain and work as the last leaf.

Then on the 8 chain left, to form the 6th LEAF, work 1 single, 1 plain, 4 treble, 1 plain, 1 single; then 1 plain in the side of the 2nd row, 1 chain, 1 plain in the 1st row. Make 10 chain, join to the point of the 5th Leaf; 4 chain, join to the 4th Leaf.

SECOND PATTERN—Make 19 chain, and for the

1st row—Turn back, and on the wrong side of the chain miss 4, 1 plain, then (2 chain, miss 1, and 1 plain, twice); turn back, leaving 10 chain.

2nd row—Make 1 chain, join to the 3rd Leaf, 2 chain, 1 plain on the last 1 chain; then (2 chain, miss 2, and 1 plain in the 2 chain of the last row, 3 times); turn back.

3rd row—(2 chain, miss 2, and 1 plain in the 2 chain, 4 times); turn back.

4th row—Same as the last.

5th row—To form the 1st Division, make 12 chain, turn, and on these 12 chain miss 4, 1 plain, (2 chain, miss 2, and 1 plain, twice), which leaves 1 chain; then work 1 chain and 1 plain in the 2 chain of the last row; and on the 4th row, work (2 chain, miss 2 and 1 plain in the 2 chain, 3 times); then for the 2nd Division, make 12 chain, turn, miss 4, 1 plain, (2 chain, miss 2, and 1 plain, twice); 1 chain and 1 plain in the same 2 chain of the 4th row as before; turn back.

6th row—Work up the division (3 chain, miss 1, and 2 plain in the 2 chain, 3 times); 1 chain, join to the 2nd Leaf, 2 chain, 2 plain in the 4 chain at the point of the Division; 2 chain, join to the next loop of chain of the Division attached to the 1st leaf; 2 chain and 2 plain more in the 4 chain of the 2nd Division. Then on the other side (3 chain, miss 1 and 2 plain in the 2



chain, 4 times); miss 1, 1 plain in the next 2 chain. Repeat from \* in the 6th row of the Centre Pattern, page 26, until the length is made.

The INSERTION—1st row—Commence in the centre of the 1st Double Bar, and work 2 plain in it; then 7 chain and 2 plain in the 4th loop of chain of the 1st division; then 5 chain, miss 8, and 2 plain in the next loop of the next division; 7 chain and 2 plain in the centre of the double bar. Repeat. At the end of each row fasten off, and begin again in the 1st stitch of the preceding row.

2nd row—Work a plain stitch in every stitch of the 1st row.

3rd row—Make 8 chain, miss 3, and work 2 plain on the 2nd row; repeat to the end.

4th row—Work 8 single on each 8 chain of the last row, always missing the 2 plain between the loops.

5th row—Commence on the centre of the 1st 8 single; then make 3 chain, miss 6 and work 2 plain on the two centre stitches of the next 8 single; repeat.

6th row—All plain stitches.

The EDGING—1st row—Commence at the foundation of the last Centre pattern, and work 2 plain in each of the three spaces formed by the 1 chain that was missed; then work 10 plain on the 10 chain, 4 plain on the 4 chain, and 1 plain on the next 10 chain; then make 12 chain, and still keeping the work on the right side, miss the last 5 plain, and join to the last stitch of the 10 plain; then on the 12 chain, miss 1 and work 11 plain; 1 single on the top of the one plain stitch, and on the 9 chain work 7 plain; turn the work on the wrong side so as to work on the plain stitches.

2nd row—Make 6 chain, miss 3, 2 plain, 8 chain, miss 4, 2 plain, 8 chain, 2 plain, 16 chain, 1 plain in the same stitch as the last plain; then 1 plain in the next stitch; 8 chain, 2 plain, 8 chain, miss 4, 2 plain, 6 chain, miss 3 1 single, turn back.



3rd row—1st Loop—Miss 1, and work 3 single on the 6 chain; and to form a Point, work 5 chain, 1 single on the 1st stitch of these 5 chain; then 3 single on the 3 chain, always missing the 2 plain, and on the 2nd Loop work 4 single, make a Point, then 4 single, miss the 2 plain and work the 3rd Loop as the last; then on the 4th loop work (4 single and make a point, 3 times); 4 single more, miss the 2 plain and work the 5th and 6th loops as the 2nd loop; for the 7th loop work 3 single, a point, and 3 single; then on the 2 remaining stitches of the 10 chain work 2 plain; repeat from the commencement of the 1st row to the end.

---

#### EXPLANATION OF TERMS.

**SINGLE STITCH**—Put the needle in a stitch of the work, bring the cotton through in a loop and also through the loop on the needle.

**PLAIN STITCH**—Put the needle in a stitch of the work, bring the cotton through; take up the cotton again and bring it through the two loops.

**TREBLE STITCH**—Turn the cotton round the needle, put it in a stitch, bring the cotton through, then take it up and bring it through two loops twice.

**LONG STITCH**—Turn the cotton twice round the needle, work as the treble stitch, bringing the cotton through two loops three times.

**EXTRA LONG STITCH**—Turn the cotton three times round the needle, work as the treble stitch bringing the cotton through two loops four times.



## PERSONAL GRACES.

**T**HE CULTIVATION OF THE GRACES through the medium of the Toilette is an object deserving important consideration; of this but few are really insensible, as is evinced in the attention devoted to sustaining the envied attractions which adorn our drawing-rooms, whether in the splendid assemblages or rank incident to the immediate presence of Royalty, or in the no less fascinating displays which form the great charm of private circles. These cursory remarks are peculiarly applicable to the universally acknowledged virtues of

**ROWLAND'S  
ELEGANT TOILETTE REQUISITES,**  
So eminently successful in their operation on  
**The Hair, the Skin, and the Teeth.**

## ROWLANDS' MACASSAR OIL,

Is a delightfully Fragrant and Transparent Preparation for the Hair, and as an Invigorator and Beautifier beyond all precedent. It bestows a permanent gloss, with a silky softness, and a strong tendency to curl, and is the only known specific capable of effectually sustaining Hair in decorative attractiveness during the exercise of dancing, or the relaxing efforts of crowded rooms.—Price 3s. 6d., 7s., 10s. 6d. (equal to four small), and 21s. per bottle.

## ROWLANDS' KALYDOR, for the Skin and Complexion.

A balmy, odoriferous, creamy liquid, as equally celebrated for safety in application as unequalled for its rare and inestimable qualities. The radiant bloom it imparts to the cheek, the softness and delicacy which it induces of the hands and arms, its capability of soothing irritation, and removing cutaneous defects, discolourations, and all unsightly appearances, render it indispensable to every Toilette.—Price 4s. 6d. and 8s. 6d. per bottle.

## ROWLANDS' ODONTO, or Pearl Dentifrice.

A White Powder, compounded of the choicest and most recherché ingredients of the ORIENTAL HERBAL, and of inestimable value in preserving and imparting a pearl-like Whiteness to the Teeth, strengthening the Gums, and giving a pleasing Fragrance to the Breath.—Price 2s. 9d. per box.

Sold at 20, Hatton Garden, London, and by Chemists and Perfumers.

☞ Ask for "ROWLANDS'" articles.

# DERBY,

MANUFACTURE THE FOLLOWING:—

**Superior Six Cord Crochet Cotton**, on Spools and in Skeins, for Sewing, Knitting, and Crochet Work.

**Superior Six Cord Sewings**, on Spools, soft finish, for Sewing Machines, &c.  
**Tatting Cotton**, on Spools.

**Patent Glace Thread**, in White, Black, and Colors, on Spools and Cards.

**Two and Three Cord Sewings**, on Spools, soft finish.

**Sewings in Balls.**

**Embroidering, Knitting, Mending, Cotton Cords, and Small Cords.**

1862.



London Exhibition Prize Medal,  
Awarded "for very Strong &  
most superior Thread."

1867.



Paris Universal Exhibition Gold  
Medal.

