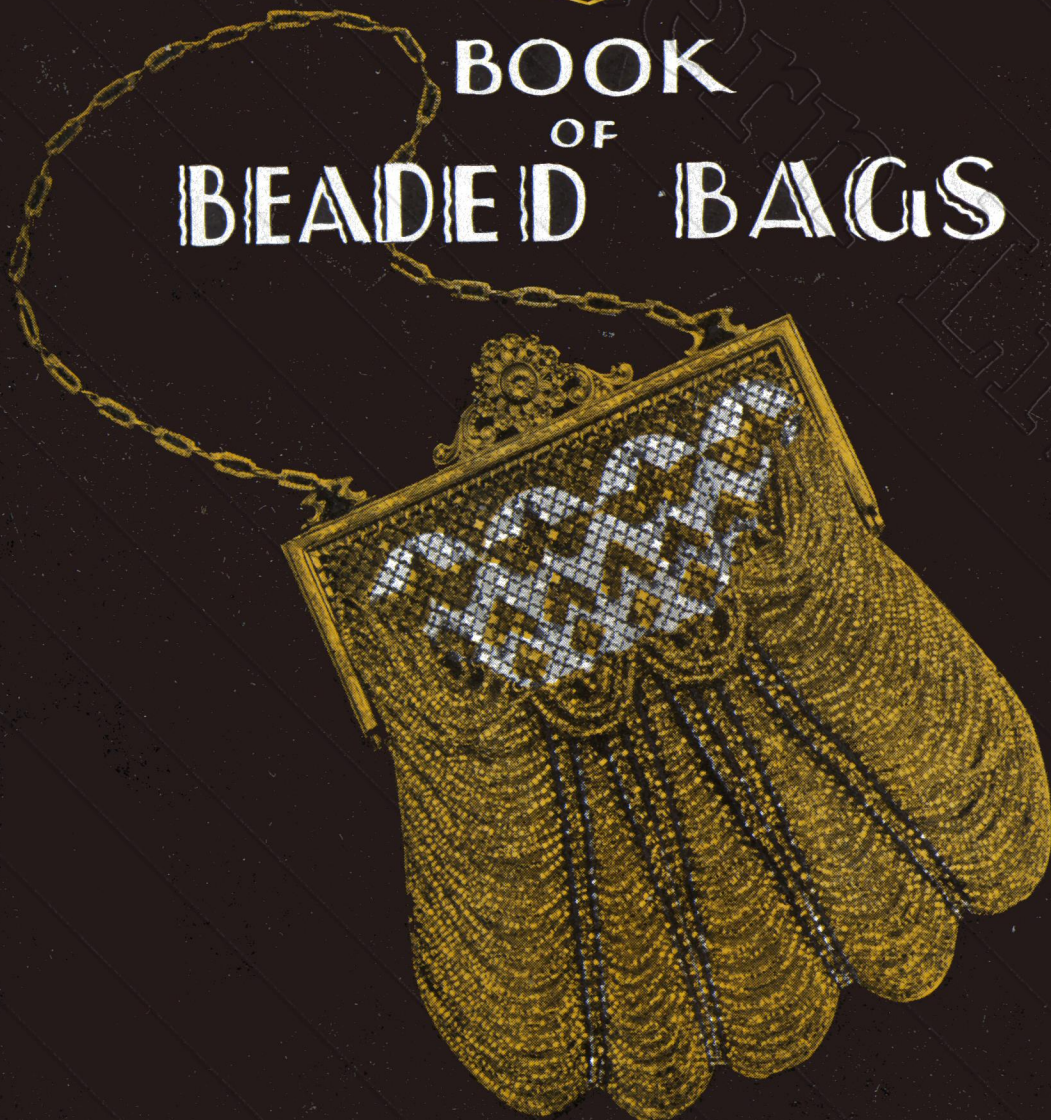




The
HIAWATHA
BOOK
OF
BEADED BAGS

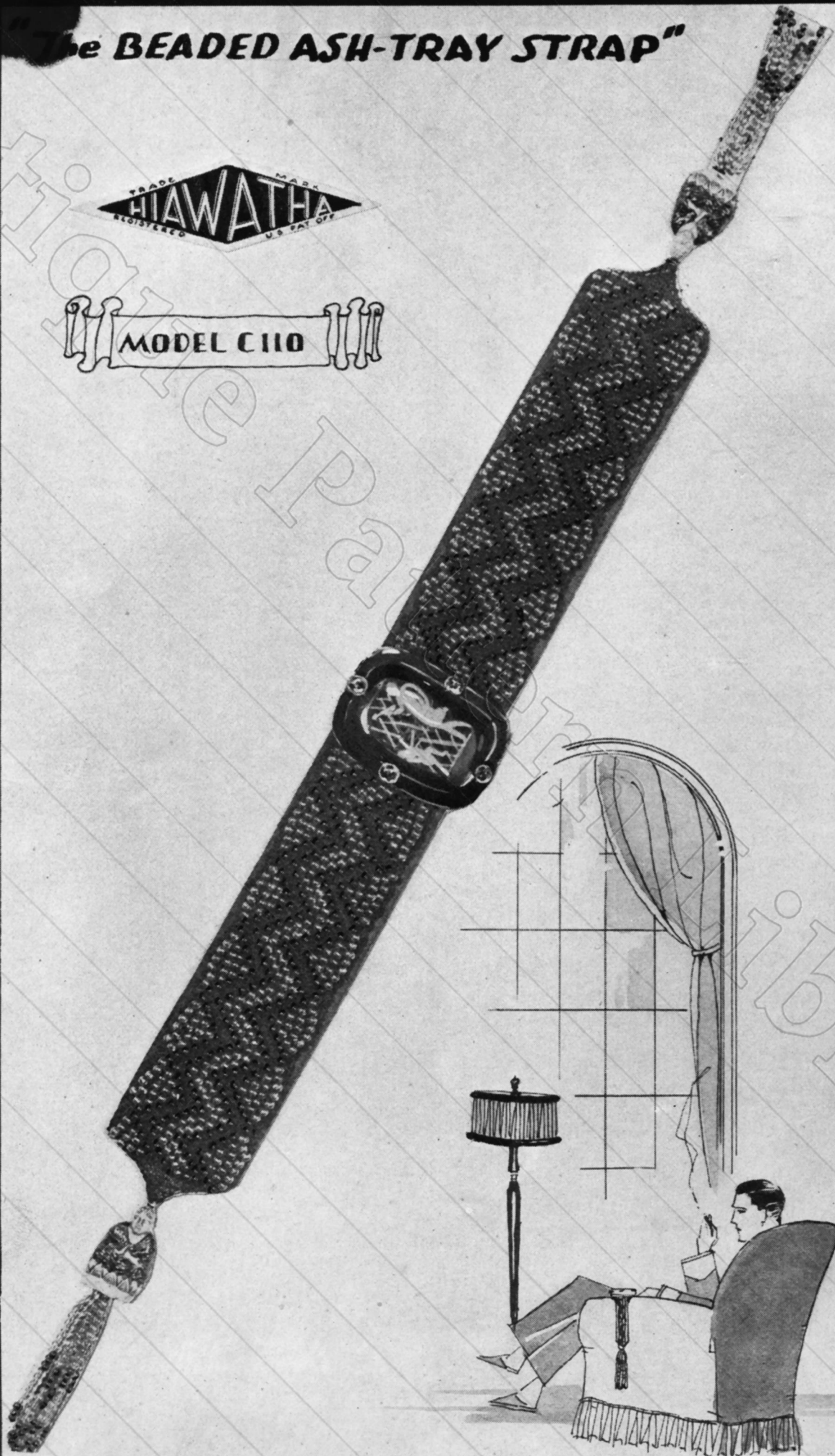


FEATURING · MODELS · DESIGNED · BY · HARRIET · B · DAVIS

The BEADED ASH-TRAY STRAP"



MODEL C110



MODEL D293

Illustrated on front cover page:

Directions on Page 5

MODEL C110

Directions on Page 25

Introducing
BEADED BAGS
of
Distinction

Including Latest Models Designed by
Harriet B. Davis

§
Easily made by following
simple instructions together
with actual photographs.
§

COPYRIGHT MCMXXVI BY

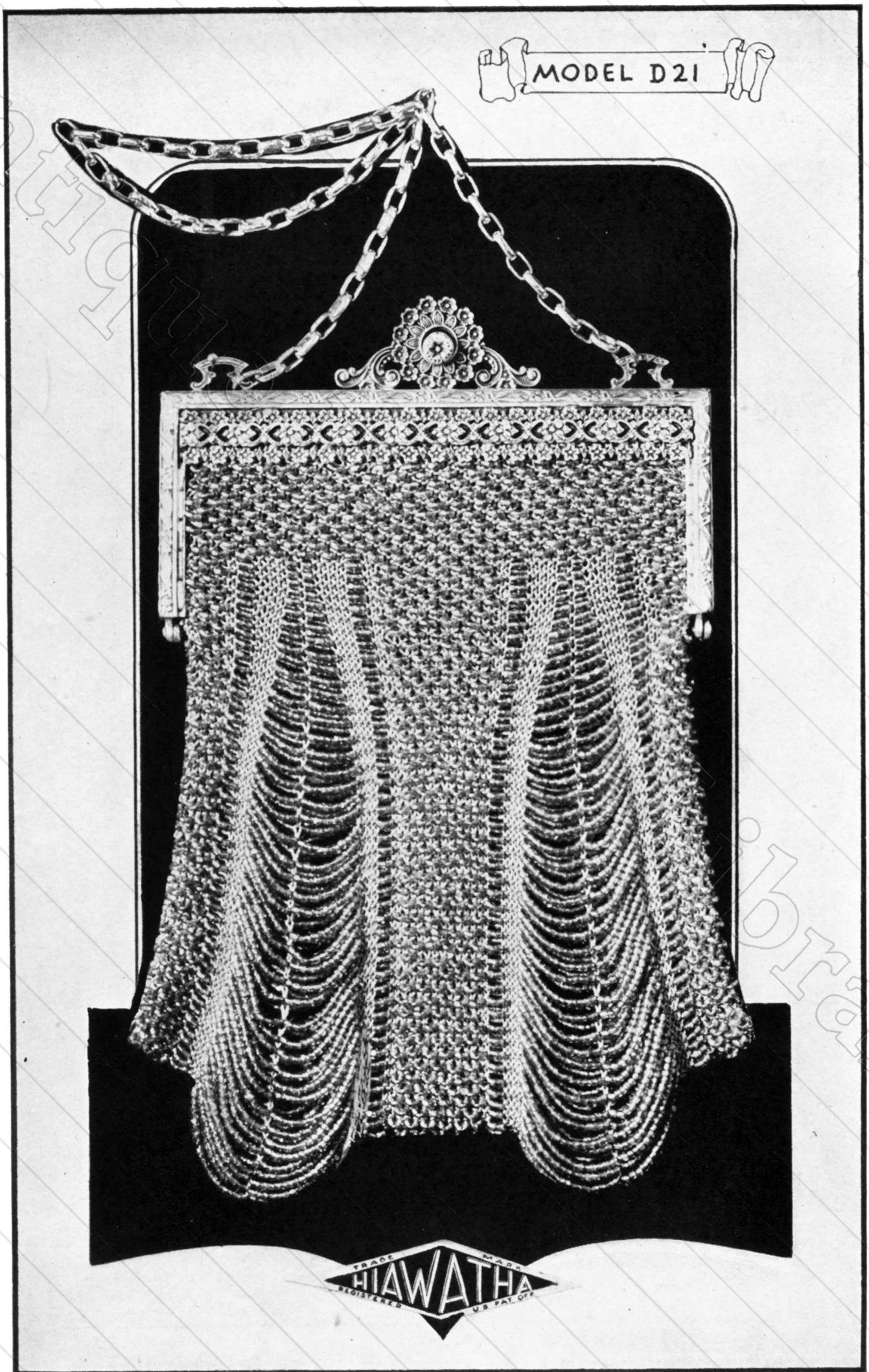
DRITZ-TRAUM CO.

258 FIFTH AVENUE, NEW YORK, N. Y.

Sole
Distributors
of



Beads
Bag Frames
Novelties



ABBREVIATIONS USED IN THIS BOOK

Bd—Bead or Beads
 Kn—Knit
 Cr—Crochet
 Ch—Chain
 Pl—Plain
 Sl—Slide or Slip
 St—Stitch

R—Ridge or Row
 P. H. S.—Plain Half Stitch
 S. C.—Single Crochet
 D. C.—Double Crochet
 H. St.—Half Stitch
 B. O.—Bind Off

"THE PEACOCK FEATHER"—Model No. D21

MATERIALS

- | | |
|--|--|
| 16 Bunches "Hiawatha" Firey-Glo Gems No. 32/21 | 1 Pair "Hiawatha" Knitting Pin Protectors No. 93 |
| 1 "Hiawatha" Bag Frame No. 6421 | 2 Beading Needles No. 16 |
| 1 Pair "Hiawatha" Knitting Needles No. 17 | 1 Spool Grey Purse Twist |

As its name implies, this model derives its design from the colorful plumage of the "Peacock."

Directions: Cast on 46 sts. Kn back. Kn 2 more ridges to sew to frame. Kn 3 sts pl, sl 2 bds. Kn 2, sl 2 bds, continue across with 2 sts, then 2 bds, until within 3 of the end. Kn these pl. Kn back plain without beads.

Ridge 2: Kn 4, sl 2 bds. Kn 2, sl 2 bds, continuing 2 sts and 2 bds with 4 pl sts at end of needle. Kn back plain.

Ridge 3: Same as ridge 1, with 3 plain sts on either end, 2 sts and 2 bds across. Kn back plain.

Ridge 4: Repeat ridge 2, with 3 sts on either end of needle. Back pl. Continue thus, alternating 3 and 4 sts on needle at end until you have 10 ridges of beading, with plain knitting on inside of bag. This alternating the beads and stitches (with no beading on inside) gives the new pebbly effect for the yoke and panels of this bag. The feather effect, with the vein down center, is beaded on both sides, as also are the border of two beads on either side of the feathers.

Ridge 11: Kn 3, sl 2 bds. Kn 2, 2 bds. Kn 2, 2 bds. Kn 4, 1 bd. Kn 1, 1 bd. Kn 4, 2 bds. Kn 3, 2 bds. Kn 2, 2 bds. Kn 2, 2 bds. Kn 2, 2 bds. Kn 2, 2 bds. Kn 3, 2 bds. Kn 4, 1 bd. Kn 1, 1 bd. Kn 4, 2 bds. Kn 2, 2 bds. Kn 2, 2 bds. Kn 3. In knitting back, for the remainder of the bag, the pebbly panels are not beaded on the inside, but the feather and the border of 2 bds are repeated (that is, the beads that are underscored are also slipped on inside), as follows: Kn 7, 2 bds. Kn 4, 1 bd. Kn 1, 1 bd. Kn 4, 2 bds. Kn 14, sl 2 bds. Kn 4, 1 bd. Kn 1, 1 bd. Kn 4, 2 bds. Kn 7.

Ridge 12: Same as ridge 11 except start by knitting 4, thus making the pebbly panels the same as yoke. The beading of the feather with its vein down center and border of 4 sts and 2 bds on either side does not change at all except that the feather increases the number of beads slipped in order to widen the bottom. Bead ridge 11 as follows: Kn 4, sl 2 bds. Kn 3, sl 2 bds. Kn 4, 1 bd. Kn 1, 1 bd. Kn 4, 2 bds. Kn 2, 2 bds. Kn 2, 2 bds. Kn 2, 2 bds. Kn 2, 2 bds. Kn 2, 2 bds. Kn 2, 2 bds. Kn 4, 1 bd. Kn 1, 1 bd. Kn 4, 2 bds. Kn 3, 2 bds. Kn 4. Always knitting back, bead exactly same as ridge 11 (except the increasing beads for feather).

Ridge 13: Repeat ridge 11, knitting back beading in the 8 places only.

Ridge 14: Repeat ridge 12, knitting back beading in the 8 places only.

Ridge 15: Repeat ridge 11, only widen the two 1 beads in feather to two 2 bds.

Ridge 16: Repeat ridge 12, only widen the two 1 bds in feather to two 2 bds.

Ridge 17: Repeat ridge 11, only widen the two 1 bds in feather to two 3 bds.

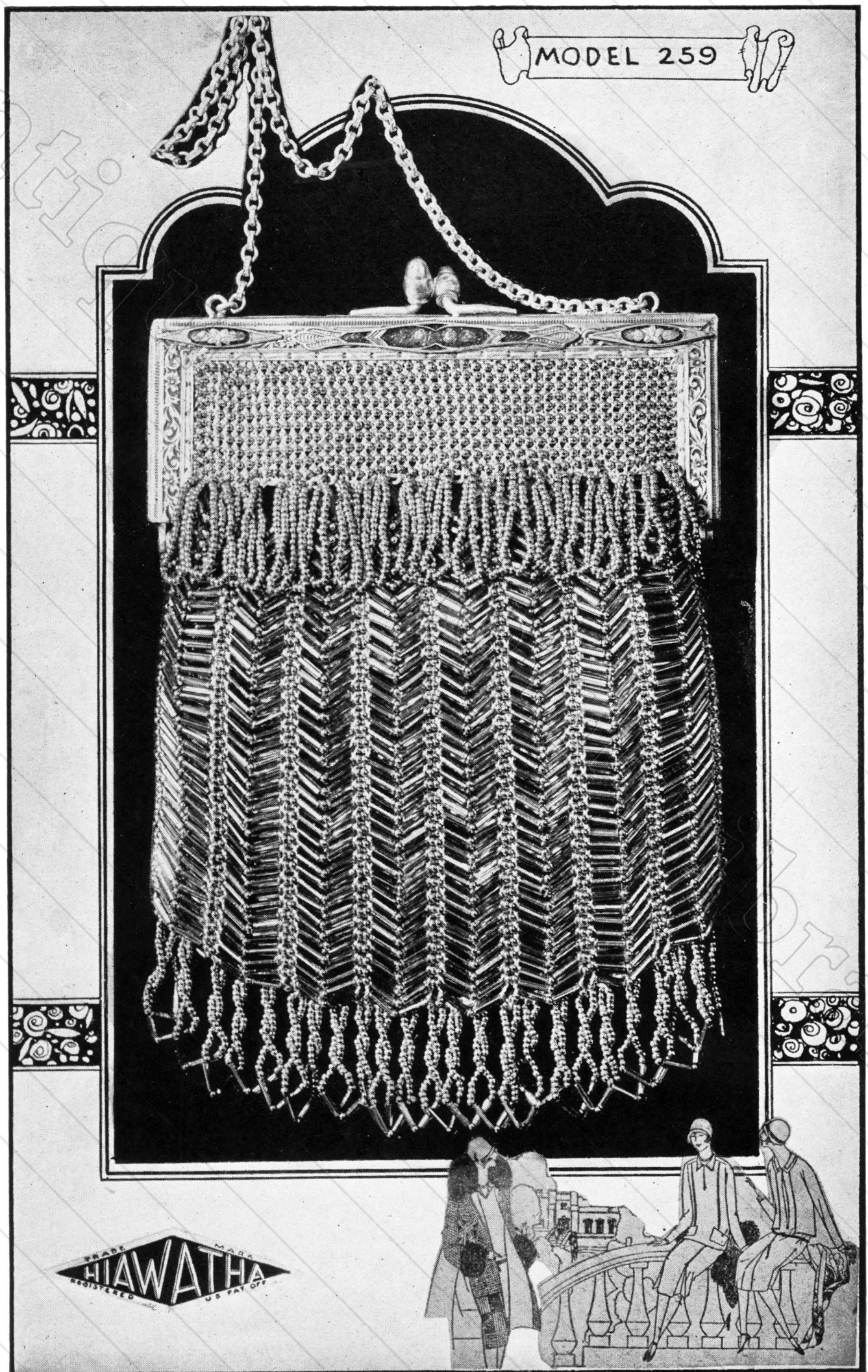
Ridge 18: Repeat ridge 12, only widen the two 1 bds in feather to two 3 bds.

Ridge 19: Repeat ridge 11, only widen the two 1 bds in feather to two 4 bds.

Ridge 20: Repeat ridge 12, only widen the two 1 bds in feather to two 4 bds.

Down through ridge 20, we have 3 and 4 sts on edge, so as to give a flat surface to sew to frame; beginning with **ridge 21**, 2 will have an extra 2 bds on each edge, as we will knit only 2 sts (in place of 4) and 1 st (in place of 3), then slip 2 bds and proceed as before, so that beads will touch on sides when bag is sewed together in frame. Continue knitting all odd-numbered ridges just like ridge 11, and the even-numbered ones like ridge 12, except that one bead is added to the feather on either side of the vein every other (or each alternate) ridge. When you finish the 46th ridge you should have 17 beads. Then knit 10 ridges of 18 bds, making 56 ridges, which is half of the bag. Reverse the instruction for the other half of bag.

It will simplify the beading much to notice that where the stitches begin and end on the needle with 3 (for first 20 ridges) and 1 stitch for remainder, that there are also 3 sts in central pebbly panel following the 2 bead border and **just before** the 2 bead border—and where there are 4 (or 2) there will be 2 stitches **just after** and **just before** the 2 bead border on sides of pebbly panel in center.



"THE GRANADA"—Model No. 259**MATERIALS**

- | | |
|---|--|
| 5 Bunches "Hiawatha" Shot Steel Beads No. 9 | 1 Pair "Hiawatha" Knitting Pin Protectors No. 93 |
| 8 Bunches "Hiawatha" Rain-Lite Beads No. 34 | 2 "Hiawatha" Beading Needles No. 16 |
| 1 "Hiawatha" Bag Frame No. 6439/5 | 1 Spool Grey Purse Twist |
| 1 Pair "Hiawatha" Knitting Pins No. 17 | |

Rows of sparkling Rain-Lite beads against a background of grey silk and shot steel beads, makes this model a suitable one for all occasions.

Size of Bag: Width at top—4½ inches. Length—5½ inches excluding fringe at bottom.

Directions: In stringing beads the following combination is repeated throughout: 1 steel bd, 1 rain-lite bd, 1 steel bd, 1 rain-lite bd, 1 steel bd. Repeat 7 more times as shown below, a dot representing a steel bead, and a dash a rain-lite bead.

1 2 3 4 5 6 7 8

 1 . 2 . 3 . 4 . 5 . 6 . 7 . 8

Repeat for 71 more rows. Cast on 1 st, sl 1 steel bd. ** Cast on 1 st, sl 3 bds. Cast on 1 st, sl 2 bds. ** Repeat from ** to ** for 7 more times. Knit back and forth, sliding beads as in above row for 36 ridges (72 rows), knitting beads instead of casting on. Kn 2 sts pl, cast on 4 pl sts. Kn 2 pl and continue this across the row. (49 sts to row.) Knit back plain. Break thread and string 1 bch of steel bds. Attach thread and knit as follows: 3 pl *** sl 1 bd. Kn 1 pl 1 bd ***. Repeat from *** to *** to end of row, finishing with 3 pl sts.

Continue plain and bead rows for 9 more ridges (18 rows) and then kn 4 pl rows and bind off. At lower edge of band sew on loops of 40 bds at every other stitch (24 loops). This completes one-half of the bag. Knit other side to correspond. Sew up sides as far as steel band. On inside of bag, with crochet hook, fasten silk to edge as follows: 8 ch 1 sc between 2 steel bds across bag, turn 10 sc in 8 ch.

Fringe: Sew fringe to crocheted edge as follows: 10 steel bds, 1 rain-lite bd, 1 steel bd, 1 rain-lite bd, 18 steel bds. Twist second loop following through the one before, making 24 loops across the bag.

"THE GOLDEN ROD"—Model No. D293**MATERIALS**

- | | |
|--|--|
| 20 Bunches "Hiawatha" Cut Gold Lined Beads No. 771 | 1 Pair "Hiawatha" Knitting Pin Protectors No. 93 |
| 1 "Hiawatha" Bag Frame No. 6450 | 2 "Hiawatha" Beading Needles No. 16 |
| 1 Pair "Hiawatha" Steel Knitting Pins No. 17 | 1 Spool Black Purse Twist |

The Golden Rod is "different," featuring the new frame with enamel mesh attached. Gold beads on black silk effects a pleasing contrast.

Size of Bag: Width at top, 4½ inches. Length, 5½ inches.

Directions: String several bunches of beads to knit. Cast on 40 sts. loosely. Knit back plain. Knit two more R. plain. Knit 16 R. of single beads, always knitting back plain as follows: Kn. 3 sts. pl., sl. 1 bd., kn. 1 st., etc., to end of needle, leaving 3 pl. sts. on end, 35 beads in row. In knitting back on the 16th R. of bds, cast off the first 10 sts. Knit the remainder pl.

Ridge 17: Cast off 10 sts, kn. 2 sts., sl. 1 bd., kn. 1 st. for 17 bds. Kn. 2 sts., measure 2 inches bds. Push up close to needle and cast on 3 sts tightly, close up to the 2 inch string of bds. Kn. back on the 3 sts., sl. 2 inches bds. Kn. 20 sts., sl. 2 inches bds, cast on 3 sts. tightly.

This leaves both ends of yoke hanging free. From now on, the entire bag will be made with the panel of 2 inches of bds. all the way, this panel to be attached to sides of yoke later, with 3 widening panels and 2 stripes of beads in center of bag. There are now only 26 sts. to knit.

Ridge 18: Kn. 3 sts., sl. 2 inches bds., kn. 2 sts., 17 single bds., kn. 2 sts., sl. 2 inches bds., kn. 3 sts. Back kn. 3 sts., sl. 2 inches bds., kn. 20 sts., sl. 2 inches bds., kn. 3 sts.

Ridge 19: Begin the central panels and stripes. Kn. 3 sts., sl. 2 inches bds., kn. 2 sts., sl. 2 bds., until there are 9 groups of 2 bds. Kn. 2 sts., sl. 2 inches bds., kn. 3 sts. Back the same. Both sides are to be knitted alike from now on. Repeat the 19th Ridge twice, making the 20th and 21st Ridges.

Ridge 22: Begin to widen the 3 widening panels as follows: Kn. 3 sts. sl. 2 inches bds., kn. 2 sts., sl. 2 bds., kn. 2 sts., sl. 3 bds. Kn. 2 sts. sl. 2 bds., kn. 2 sts, sl 2 bds, kn 2 sts, sl 3 bds. Kn 2 sts sl 2 bds, kn 2 sts, sl 2 bds, kn 2 sts, sl 3 bds. Kn 2 sts sl 2 bds, kn 2 sts, sl 2 inches bds, kn. 3 sts. Back the same.

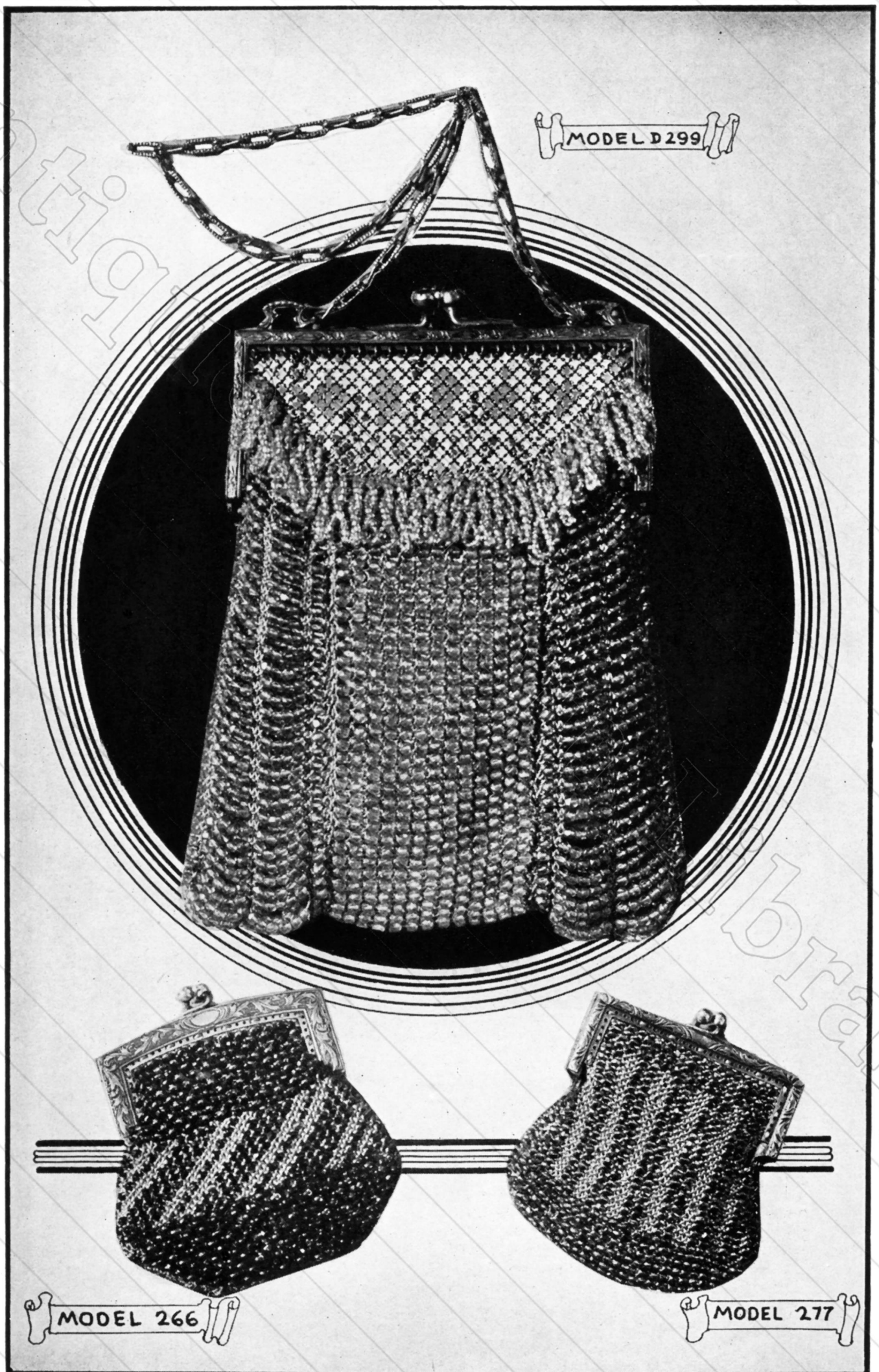
Ridge 23: Repeat Ridge 22.

Ridges 24 and 25: Widen the 3 bd panels to 4 bds.

Ridges 26 and 27: Widen the 4 bd panels to 5 bds.

Ridges 28 and 29: Widen the 5 bd panels to 6 bds. Also on 28th ridge, change the 3 sts at beginning and end of needle to 1 st, 1 bd, 2 sts, and continue through remainder of work.

Continued on Page 19



"DUO COLOR"—Model No. D299**MATERIALS**

- | | |
|---|--|
| 4 Bunches "Hiawatha" Crystal Flame Gems No. 36/27 | 1 "Hiawatha" Frame No. 6457/4½ |
| 2 Bunches "Hiawatha" Crystal Flame Gems No. 36/11 | 1 Pair "Hiawatha" Knitting Pins No. 15 |
| 3 Bunches "Hiawatha" Supercut Gems No. 43/27 | 1 Pair "Hiawatha" Knitting Pin Protectors No. 93 |
| | 2 "Hiawatha" Beading Needles No. 16 |
| | 1 Spool French Blue Purse Twist |

Directions: Small beads are used for yoke under the curtain and for fringe. Large dark beads for widening panels on sides, and the large light beads for the center panel.

String 25 inches of small beads. Cast on 33 sts. Knit back plain. Knit 2 more ridges plain. Fourth ridge: Kn 3 pl. Kn 1, sl 1 bd for 28 bds. Kn back plain. Repeat until there are 12 ridges of beads. Cut thread, and string large beads as follows: 5 dark, 14 light, 18 dk, 14 lt, 20 dk, 14 lt, 26 dk, 14 lt twice; 27 dk, 14 lt once; 28 dk, 14 lt 5 times; 30 dk, 14 lt once; 36 dk, 14 lt 11 times; 38 dk, 14 lt once; 44 dk, 14 lt 5 times; 46 dk, 14 lt once; 52 dk, 14 lt 4 times; 46 dk, 14 lt once; 44 dk, 14 lt 5 times; 38 dk, 14 lt once; 36 dk, 14 lt 11 times; 30 dk, 14 lt once; 28 dk, 14 lt 5 times; 27 dk, 14 lt once; 26 dk, 14 lt twice; 20 dk, 14 lt, 18 dk, 14 lt, 5 dk.

Start knitting on last ridge of yoke. Ridge 1: Kn 3, sl 2 bds. Kn 2, sl 2 bds. Kn 2, sl 1 bd. Kn 3. Kn 1, sl 1 bd for 14 bds. Kn 3, sl 1 bd. Kn 2, sl 2 bds. Kn 2, sl 2 bds. Kn 3. In knitting back, always repeat only the beads in the two widening panels on each end of needle, as Kn 3, sl 2 bds. Kn 2, sl 2 bds. Kn 3, sl 2 bds. Kn 2, sl 2 bds. Kn 3.

Ridge 2: Repeat ridge 1.

Ridges 3, 4, 5: Increase the 2 bd panels to 3 bds.

Ridge 6: Instead of 3 pl sts at beginning and end of needle, Kn 1, sl 1 bd. Kn 2 and proceed as before, 3 bds in panels.

Ridges 7, 8, 9, 10, 11: As ridge 6.

Ridges 12 to 23 inclusive (12 ridges): 4 bds in panels.

Ridges 24 to 29 inclusive (6 ridges): 5 bds in panels.

Ridges 30 to 34 inclusive (5 ridges): 6 bds in panels.

In knitting back on ridge 34, reduce to 5 bds in panels, and continue knitting design in reverse order toward top of bag, always reducing to lesser count on **back** of the ridge, so that the last ridge of large beads at top can be knitted back plain. Before proceeding to the small bead yoke, cut thread and string 25 inches of small bds and knit 12 ridges as at other end, with 3 pl ridges at top, and cast off sts loosely.

It is advisable to make fringe on edge of mesh curtains before sewing bag into frame. Start thread in top ring of sloping side where it is attached to the bag. String 1½ inches of small beads, slide close to frame, twist thread with thumb and forefinger until beads curl up, fasten thread into same ring, pass thread through next ring, make a loop of fringe into second ring, and so on down the side to the corner. Across bottom edge, make a loop in each ring.

Sew sides of bag together along 1 bd edges. Sew into frame on rings by which mesh is fastened to frame and holes on sides.

"PURSELET"—Model No. 277**MATERIALS**

- | | |
|-------------------------------------|--|
| 1 "Hiawatha" Bag Frame No. 6328 | 1 Pair "Hiawatha" Steel Knitting Pins No. 17 |
| 1 Bunch "Hiawatha" Quality Beads | 1 Pair "Hiawatha" Knitting Pin Protectors No. 93 |
| 1 25 yd. Spool Purse Twist | |
| 2 "Hiawatha" Beading Needles No. 16 | |

It is always desirable to have a small change purse to fit into and match the larger beaded bag. With a few left-over beads and a "Hiawatha" Frame, this can be easily accomplished.

Directions: String beads. Cast on 24 sts. Kn 3 rows pl (always knit back with plain stitches). **First row:** Kn 3 pl, 18 bds, 3 pl. For 2nd, 3rd and 4th row, knit as first row.

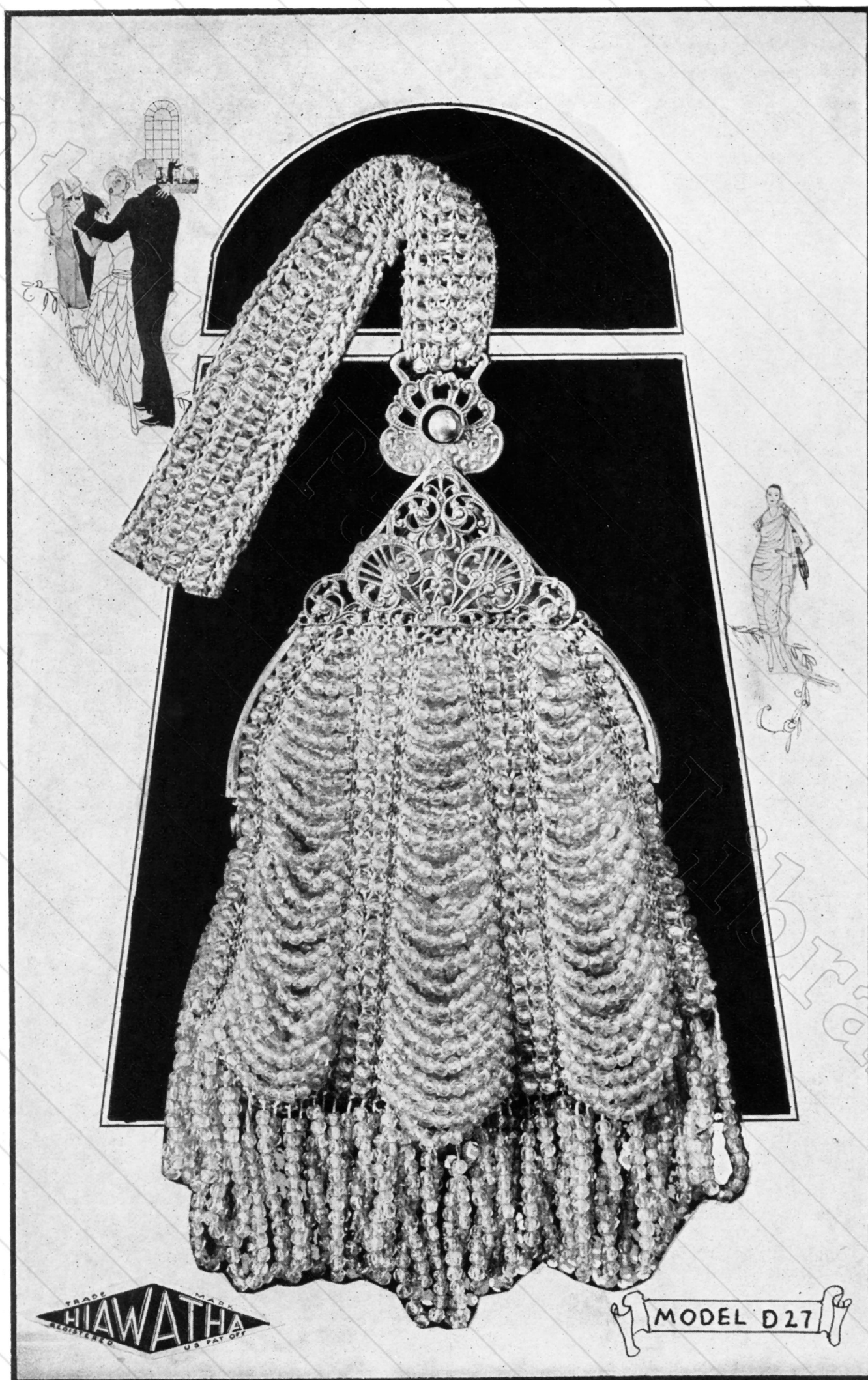
Fifth row: Kn 3 pl, 2 bds, 2 pl, 2 bds, 2 pl, 2 bds, 2 pl, 2 bds, 2 pl, 2 bds, 3 pl. Repeat for 9 more rows.

Row 14: Cast on 2 sts at beginning and end of row, knitting as follows: 1 pl, 2 bds, 2 pl, 2 bds, 2 pl and continue across the line, ending with one pl st. Repeat for 2 more rows.

Row 17: Cast on 1 pl st at beginning and end of row, and knitting as follows: 1 pl, 3 bds, 2 pl, 2 bds, 2 pl, 2 bds, 2 pl, 2 bds, 2 pl, 2 bds, 2 pl, 3 bds, 1 pl. Repeat for 4 more rows.

Row 22: Cast on 1 pl st at beginning and end of row, knitting as follows: 1 pl, 4 bds, 2 pl, 2 bds, 2 pl, 2 bds, 2 pl, 2 bds, 2 pl, 2 bds, 2 pl, 4 bds, 1 pl. Knit 3 more rows as 22nd row.

Row 26: Knit 1 pl, 30 bds, 1 pl and continue for 6 more rows, always taking off 1 bd at beginning and end of each row. Finish with 20 bds across bottom.



"THE VALENCIA"—Model No. D27**MATERIALS**6 Bunches "Hiawatha" Crystal Flame Gems
No. 36

1 "Hiawatha" Bag Frame No. 5852

1 Pair Steel Knitting Pins No. 15

1 Pair "Hiawatha" Knitting Pin Protectors No. 93

2 "Hiawatha" Beading Needles No. 16

1 Spool Purse Twist

This chic little party bag uses Crystal-Flame Gems, arranged in graceful drapes suspended from a filigree frame. A suitable gift which can be made quickly.

Directions: This bag is knit with three widening panels, separated by straight rows of beads between and on each side of the bag.

Cast on 26 sts. Knit back plain. Knit two more ridges plain. **Ridge 1** with beads: K 3, sl 1 bd, K 3 sl 2 bds, K 3 sl 1 bd, K 1 sl 1 bd, K 3 sl 2 bds, K 3 sl 1 bd, K 1 sl 1 bd, K 3 sl 2 bds, K 3 sl 1 bd, K 3. Knit back plain with 6 sts sl 2 bds, K 7 sts sl 2 bds, K 7 sts sl 2 bds, K 6 sts. **Ridge 2:** Same as Ridge 1, but slipping 3 bds instead of two in the three widening panels. Always knit back as in Ridge 1. Repeat the widening panels on the back.

Ridges 3 and 4: Sl 4 bds in the three panels.

Ridges 5 and 6: Sl 5 bds in the three panels.

Ridges 7 and 8: Sl 6 bds in the three panels.

Ridges 9 and 10: Sl 7 bds in the three panels.

Ridges 11 and 12: Sl 8 bds in the three panels.

On the 12th R, K 2, sl 1 bd, K 1, sl 1 bd, K 3 at beginning of ridge, and at end of needle finish the same way to make the outside stripes of 2 bds like the two between the panels. Knit back as in other ridges.

Ridges 13 and 14: Sl 9 beads.

Ridges 17 and 18: Sl 11 beads.

Ridges 15 and 16: Sl 10 beads.

Ridges 19 to 23: Sl 12 beads.

This is half of the bag. The next three ridges are for the fringes. **Ridge 24:** K 2, sl 1 bd, K 1, sl 1 bd, K 3 cast on 10 sts K 3, sl 1 bd, K 1, sl 1 bd, K 3 cast on 10 sts K 3, sl 1 bd, K 1, sl 1 bd, K 3 cast on 10 sts K 3, sl 1 bd, K 1, sl 1 bd, K 2, Knit back plain. **Ridge 25:** K 1 st measure $2\frac{1}{2}$ inches bds push up close to needle; twist silk between fingers to make the loop twist on itself. Knit into next stitch, K 1 st plain. Make another twisted loop, and continue across the needle. There should be 2 sts between each loop, and 1 st on each end of needle and 28 loops. Knit back pl. **Ridge 26:** K 2 sts, sl 1 bd, K 1, sl 1 bd, K 3 cast off 10 sts. (Remember to knit 2 sts to cast off first one.) K 2 more besides the one on needle, making 3 on needle. Sl 1 bd, K 1, sl 1 bd, K 3 cast off 10 sts, K 3, sl 1 bd, K 1, sl 1 bd, K 3, cast off 10 sts K 3, sl 1 bd, K 1, sl 1 bd, K 2. In knitting back, K 6, sl 12 bds, K 7, sl 12 bds, K 7, sl 12 bds, K 6. Now continue the other side of the bag, decreasing the panels toward the top—5 R with 12 bds, 2 with 11 bds, etc.

Strap: Cast on 9 sts. Knit back plain. Next ridge K 2, sl 1 bd, K 2, sl 1 bd, K 1, sl 1 bd, K 2, sl 1 bd, K 2. Knit back plain. Continue until there are nine inches. Knit across plain and cast off, leaving an end of the thread to sew strap together. Slip one end through the slot in the frame of the bag and sew together flatly. Knit a small strap two inches long without beads. Cast on 6 sts. Knit plain for $1\frac{3}{4}$ inches. To finish in a point, K 1, K 2 together, K 2 together, K 1 back K 2 together, K 2 together, K 2 together, K 1, draw thread through and leave several inches for sewing. Sew straight end on edge of beaded strap at the seam, wrap around evenly and sew point down neatly.

"THE PURSELET"—Model No. 266**MATERIALS**

2 Bunches "Hiawatha" Quality Beads 9/0

1 "Hiawatha" Frame No. 6329

1 Pair "Hiawatha" Knitting Pins No. 17

1 Pair "Hiawatha" Knitting Pin Protectors No. 93

1 Spool Purse Twist (25 Yard Spool)

Directions: Cast on 24 sts. Kn 2 ridges plain. Kn 3 ridges of 2 st, 21 bds, 2 sts each ridge. Increase 1 st on plain row on each end.

Kn 3 ridges of 2 st, 23 bds, 2 st increase as before.

Kn 1 row of 2 sts, 27 bds and 2 sts.

Kn 10 ridges exactly as the following pattern: X designating Bead on chart; O designating Plain Stitch.

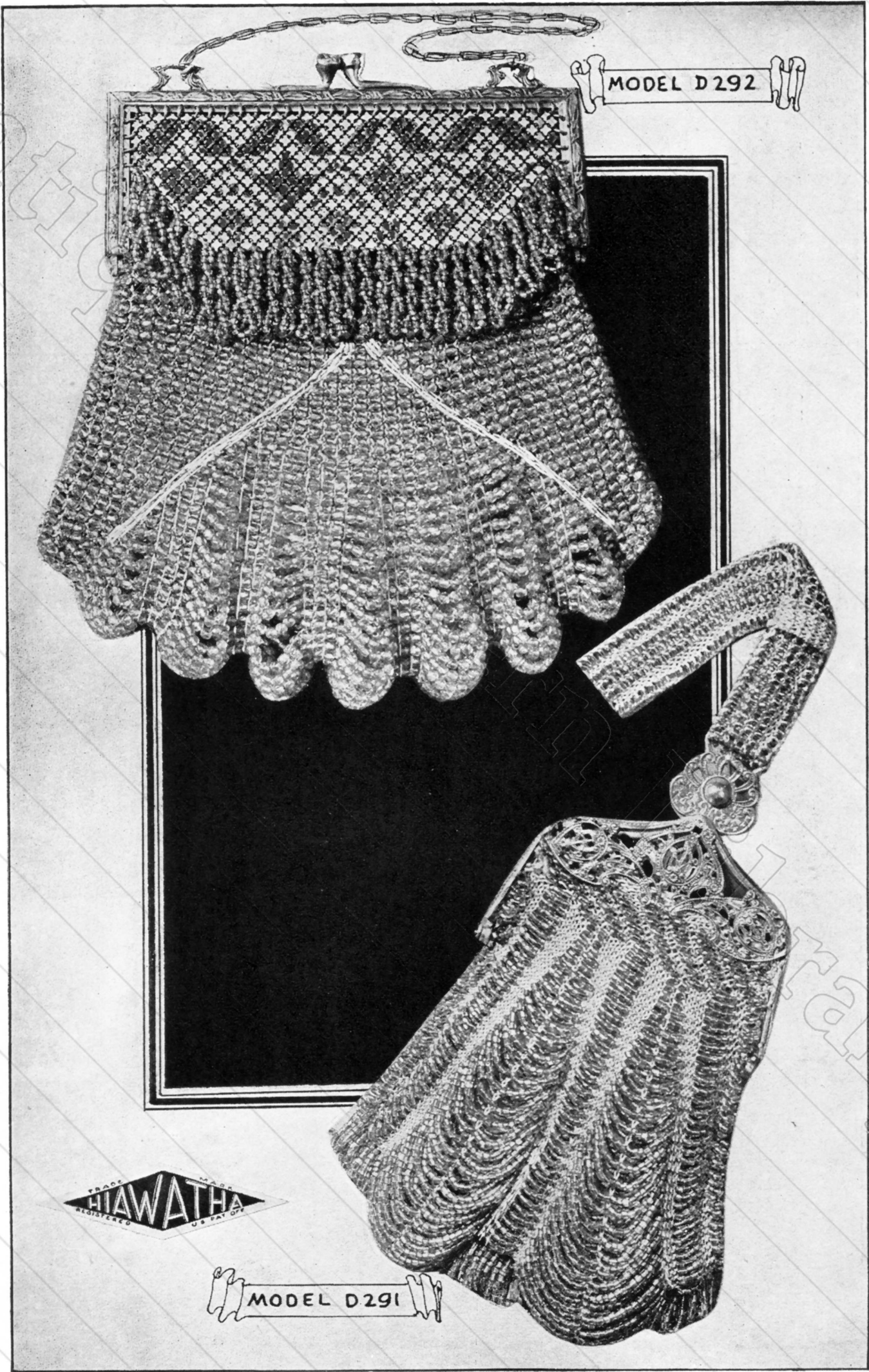
```

X X X O O X O O X X X X O O X O O X X X X O O X O O X X X
X X X X O O X O O X X X X O O X O O X X X X O O X O O X X
O X X X X O O X O O X X X X O O X O O X X X X O O X O O X
O O X X X X O O X O O X X X X O O X O O X X X X O O X O O
X O O X X X X O O X O O X X X X O O X O O X X X X O O X O O
O X O O X X X X O O X O O X X X X O O X O O X X X X O O X
O O X O O X X X X O O X O O X X X X O O X O O X X X X O O
X O O X O O X X X X O O X O O X X X X O O X O O X X X X O
X X O O X O O X X X X O O X O O X X X X O O X O O X X X X
X X X O O X O O X X X X O O X O O X X X X O O X O O X X X

```

Kn 2 ridges of 1 st 29 bds 1 st, decrease 1 st on following 6 ridges, so that on the eighth ridge 1 st 17 bds 1 st.

Bind off 3 sts on plain row, then 3 sts on last beaded row, which will have eleven beads on. Bind off remaining stitches.



“THE MESH CURTAIN”—Model No. D292

MATERIALS

- | | |
|--|--|
| 7 Bunches "Hiawatha" Crystal Flame Gems No. 36 | 1 Pair Knitting Pins No. 15 |
| 4 Bunches "Hiawatha" Firey-Glo Gems No. 32 | 1 Pair "Hiawatha" Knitting Pin Protectors No. 93 |
| 1 "Hiawatha" Frame No. 6451 | 2 "Hiawatha" Beading Needles No. 16 |
| 1 Spool Grey Purse Twist | |

Another model featuring the new mesh curtain frame. The harmonized enamel tints on the mesh lends just enough contrast to give the bag the needed touch of color.

Directions: String one bunch of small beads. Cast on 42 sts. Knit back plain. Knit two more ridges. Fourth ridge: Kn 3 sts pl, sl 1 bd, K 1, sl 1 bd, etc., to last 3 sts. Kn these pl. Knit back plain. Repeat ridge 4 until there are 15 ridges of beads. Knit this part quite tightly. Now string the large beads. Knit on to the last ridge of small beads as follows, always knitting back plain.

Ridge 1: K 2, sl 1 bd. K 1, sl 1 bd, etc., for 17 bds. K 3, sl 1 bd, K 3, sl 1 bd. K 1, sl 1 bd for 17 bds. K 2.

Ridge 2: K 1, sl 1 bd. K 1, sl 1 bd for 18 bds. K 3, sl 1 bd. K 3, sl 1 bd. K 1 for 18 bds. Knit back plain.

Ridge 3: K 1, sl 1 bd for 17 bds. K 3, sl 1 bd. K 1, sl 1 bd. K 1, sl 1 bd. K 3, sl 1 bd. K 1 for 17 bds.

Ridge 4: K 1, sl 1 bd. for 16 bds. K 3, sl 1 bd. K 1 for 5 bds. K 3, sl 1 bd. K 1 for 16 bds.

Ridge 5: K 1, sl 1 bd for 15 bds. K 3, sl 1 bd. K 1 for 7 bds. K 3, sl 1 bd. K 1 for 15 bds.

Ridge 6: K 1, sl 1 bd for 14 bds. K 3, sl 1 bd. K 1 for 9 bds. K 3, sl 1 bd. K 1 for 14 bds.

Ridge 7: K 1, sl 1 bd for 13 bds. K 3, sl 1 bd. K 1 for 11 bds. K 3, sl 1 bd. K 1 for 13 bds.

Ridge 8: K 1, sl 1 bd for 12 bds. K 3, sl 1 bd. K 1 for 13 bds. K 3, sl 1 bd.
K 1 for 12 bds.

Ridge 9: K 1, sl 1 bd for 11 bds. K 3, sl 1 bd. K 1 for 15 bds. K 3 sl 1 bd. K 1 for 11 bds.

Ridge 10: K 1, sl 1 bd for 10 bds. K 3, sl 1 bd. K 1 for 17 bds. K 3, sl 1 bd. K 1 for 10 bds.

Now the widening panels begin, and these should always be repeated in knitting back on each ridge, knitting plain wherever there is one bead in a stitch.

Ridge 11: 10 bd. sts. K 3, sl 1 bd. K 1, sl 1 bd. K 1, sl 1 bd. K 1, sl 1 bd. K 1, sl 2 bds. K 1, sl 1 bd. K 1, sl 1 bd. K 1, sl 1 bd. K 1, sl 2 bds. K 1, sl 1 bd. K 1, sl 1 bd. K 1, sl 1 bd. K 1, sl 2 bds. K 1, sl 1 bd. K 1, sl 1 bd. K 1, sl 1 bd. K 3, 10 bd sts.

Ridge 12: 9 bd sts. K 3, sl 1 bd. K 1, sl 2 bds. K 1, 3 bd sts, sl 2 bds, 3 bd sts, sl 2 bds, 3 bd sts, sl 2 bds, 3 bd sts, sl 2 bds. K 1, sl 1 bd. K 3, 9 bd sts.

Ridge 13: 9 bd sts. K 3, 1 bd. K 1, sl 3 bds in the 5 panels, with 3 single beads between 1 bd, 3 sts, 9 bds on end.

Ridge 14: 8 bds, 3 sts, 2 bd sts, 3 bds in each panel.

Ridge 15: 8 bd sts. K 3, 2 bd sts, sl 4 bds in each panel.

Ridge 16: 7 bd. sts K 3, 3 bd sts, sl 4 bds in each panel.

Ridge 17: 7 bd sts. K 3, 3 bd sts, sl 5 bds in each panel.

Ridge 18: 6 bd sts. K 3, 4 bd. sts, sl 5 bds in each panel.

Ridge 19: 6 bd. sts. K 3, 4 bd sts, sl 6 bds in each panel.

Ridge 20: 5 bd sts. K 3, 1 bd st, sl 2 bds, 3 bd sts in 5 center panels.

Ridge 21: 5 bd sts. K 3, 1 bd st, sl 3 bds, 7 bds in 5 center panels.

Ridge 22: 4 bd sts. K 3, 2 bd sts, sl 4 bds, 3 bd sts, 8 bds in 5 center panels.

Ridge 23: 3 bd sts. K 3, 3 bd sts, sl 5 bds, 3 bd sts, 8 bds in 5 center panels.

Ridge 24: 2 bd sts. K 3, 4 bd sts, sl 6 bds, 3 bd sts, 9 bds in 5 center panels.

Ridge 25: 1 bd st. K 3, 5 bd sts, sl 7 bds, 3 bd sts, 9 bds in 5 center panels.

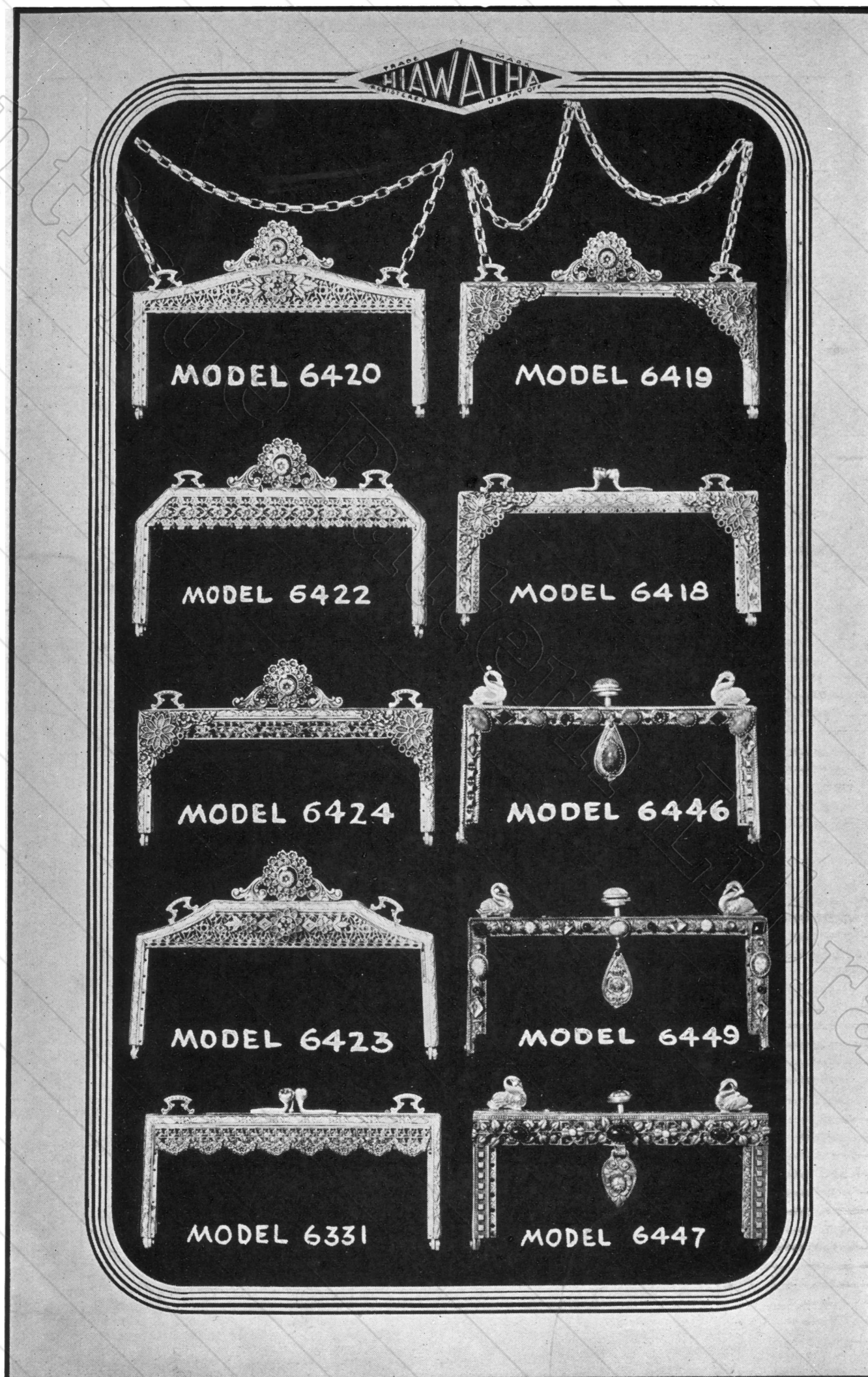
Ridge 26: K 2 sts together. Knit next 2 together, K 1, sl 4 bds, etc., sl 7 bds with 9 centre panel.

Ridge 27: K 2 sts together, 2 more together, K 1, 2 bd sts, sl 7 bds with 9 in centre panel. This is the centre ridge at bottom of bag. In knitting back on this ridge, widen 2 sts on each end, where you can knit them together on the preceding ridge, so that you can repeat the four bd sts at the beginning and end of needle as in ridge 26.

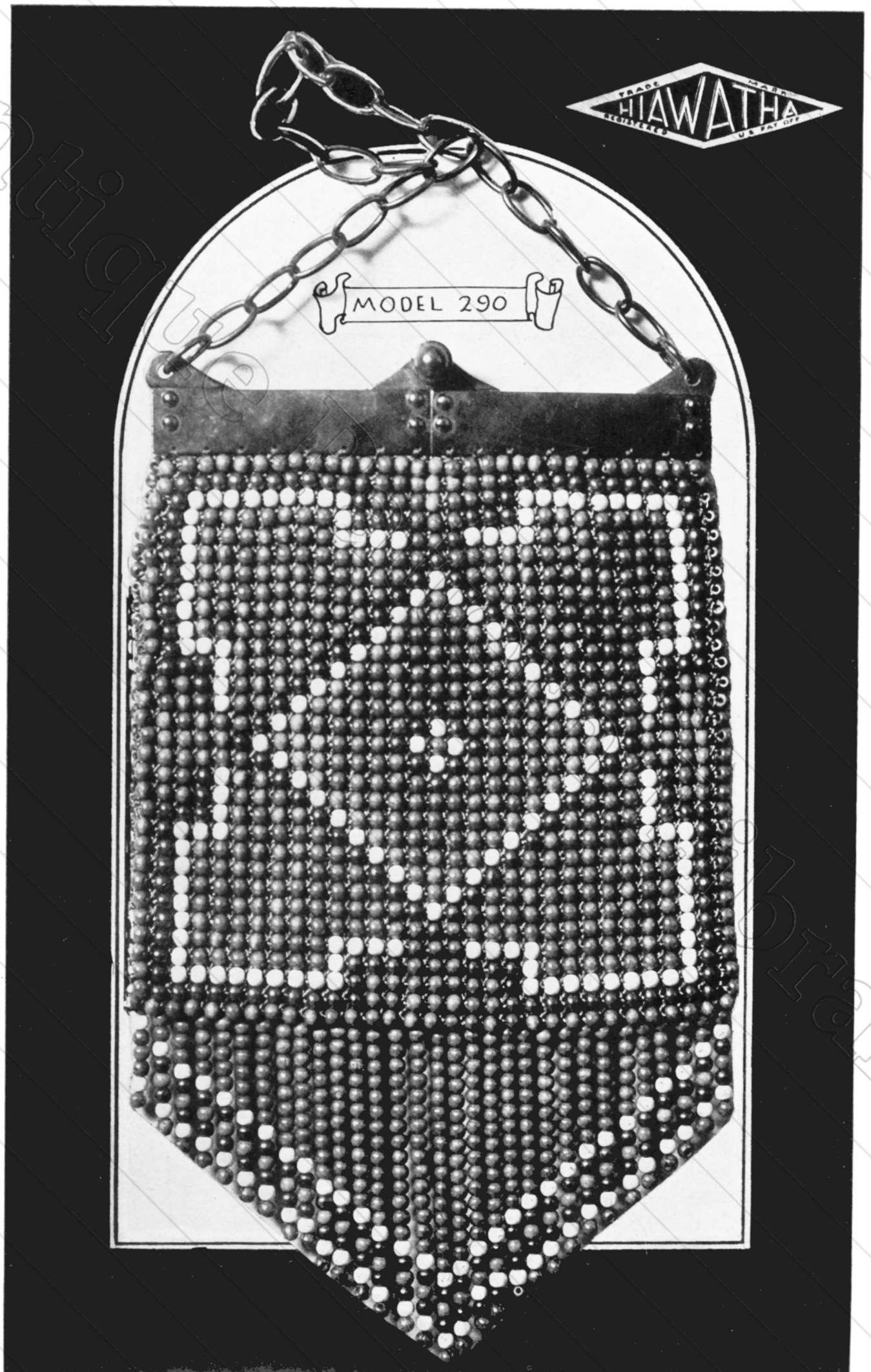
On the next ridge, widen 2 sts on each end again so that you can start with 1 bd st, K 3 as in ridge 25. From here on repeat the instructions backwards, for the other side of the bag. In sewing the sides together, be careful to get the 27th ridge exactly in the center so that the round corner will be even and the 3 st stripe on each side will meet at the bottom.

Fringe on Panel: Tie thread securely in top ring of panel on one side, where it is attached to frame, string two inches of beads, slide beads close to frame, twist silk between thumb and forefinger until beads curl up, pass thread back through same ring, through next ring, make a loop of fringe in third ring, etc., to point. This should make 6 loops on the sloping side to point at bottom. Across the bottom edge make a loop of fringe in each ring, and 6 on the other sloping side, including the loop at the point. It is much easier to put the fringe on the mesh curtains before sewing the bag into the frame.

Sew sides of bag together along the 1 bead edges, taking care to make the round corners at the bottom as symmetrical as possible. Sew into frame on the rings by which the mesh curtain is attached to frame, and line and trim to suit the individual taste.



Illustrated above are a few additional styles in bag frames that are suitable for Beaded Bags,
Green Gold finish and in four,



"THE NAVAJO"—Model No. 290**MATERIALS**

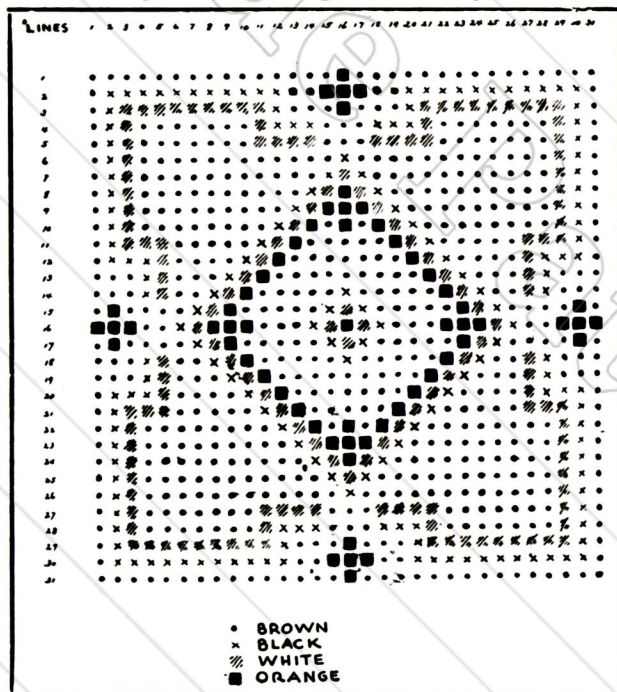
- | | |
|--|--|
| 2 Bunches "Hiawatha" Ebenoid Beads 3222/4 | 1 Spool Brown Texto Yarn |
| 4 Strings "Hiawatha" Ebenoid Beads 3222/1 | 1 Pair "Hiawatha" Knitting Pins No. 10 |
| 3 Strings "Hiawatha" Ebenoid Beads 3222/2 | 1 Pair "Hiawatha" Knitting Pin Protectors No. 93 |
| 3 Strings "Hiawatha" Ebenoid Beads 3222/20 | |

With its beautiful Indian design, this roomy bag is suitable for all seasons of the year, and its usefulness makes it very desirable to have.

Strir g beads according to diagram below:

Directions: Cast on 32 sts. Knit back plain. Second ridge, kn 1 st, slip 1 bd. Kn 1 st, slip 1 bd, etc., to end of row, 31 bds in row. Always knit back plain. When one side is completed, cut silk but do not bind off. String beads for the other side and knit the same. Knit once across and bind off at top. Sew up sides.

Attach silk to one corner, string 1 brown, 1 natural, 1 black, 1 orange, 1 black, 1 natural, 1 brown. Slip needle back through all the beads except the last one, fasten in bag and proceed with next string, increasing one brown bead nearest bag in each string to center of bag, and decreasing one bead toward other end. There should be 16 strings half way across, and 16 brown beads in the longest string.

**"THE FEATHERETTE"****Dance Bag—Model No. D291****MATERIALS**

- | |
|--|
| 10 Bunches "Hiawatha" Firey-Glo Gems No. 32 |
| 1 "Hiawatha" Frame No. 6429 |
| 1 Pair "Hiawatha" Knitting Pins No. 17 |
| 1 Pair "Hiawatha" Knitting Pin Protectors No. 93 |
| 2 "Hiawatha" Beading Needles No. 16 |
| 1 Spool Purse Twist |

Dainty and individual is this little dance and party bag. The peacock feather effect is accentuated by contrasting Blue Firey-Glo Gems with grey silk.

Directions: Cast on 26 sts loosely. Knit back plain. Add two more ridges, plain.

Ridge 1: With beads, Kn 4, sl 3 bds. Kn 3, sl 3 bds. Kn 3, sl 3 bds, etc., last 4 sts plain. There should be 7 loops of beads. Knit back plain.

Ridge 2: Kn 3, sl 3 bds. Kn 3, sl 3 bds. Kn 3, sl 3 bds, etc., 2 sts on end, 8 loops of beads. Kn back plain.

Ridge 3: Kn 2, sl 3 bds. Kn 3 sl 3 bds. Kn 3 etc. 3 sts on end. Knit back plain.

Ridge 3: Kn 2, sl 3 bds. Kn 3 sl 3 bds. Kn 3 etc. 3 sts on end. Knit back plain.

Ridge 4: Kn 4, sl 3 bds. Kn 3, etc., 4 sts on end. Knit back plain.

Ridge 5: Kn 3, sl 3 bds. Kn 3, etc., 2 sts on end. Knit back plain.

Ridge 6: Kn 2, sl 3 bds. Kn 3, etc., 3 sts on end. Knit back plain.

Ridge 7: Kn 1, sl 3 bds. Kn 3, etc., 4 sts on end. Knit back plain.

Ridge 8: Kn 1, sl 3 bds. Kn 3, sl 4 bds. Kn 4, sl 1 bd. Kn 1, sl 1 bd. Kn 4, sl 4 bds. Kn 4, sl 1 bd. Kn 1, sl 1 bd. Kn 4, sl 4 bds. Kn 3, sl 3 bds. Kn 1. From now on: Knitting back repeat all the beading on the wrong side, excepting the loop of 3 bds at beginning and end of needle. Kn 4 pl at each end on back of ridges.

Ridges 9 and 10: Repeat ridge 8. All following ridges are the same, excepting the two panels of 1 bd 1 st 1 bd. The two panels are widened as follows: beginning with ridges 11 and 12 widen the 1 bd 1 st 1 bd to 2 bd.

Ridges 13 and 14: Widen the 1 bd 1 st 1 bd to 3 bds.

Ridges 15 and 16: Widen the 1 bd 1 st 1 bd to 4 bds.

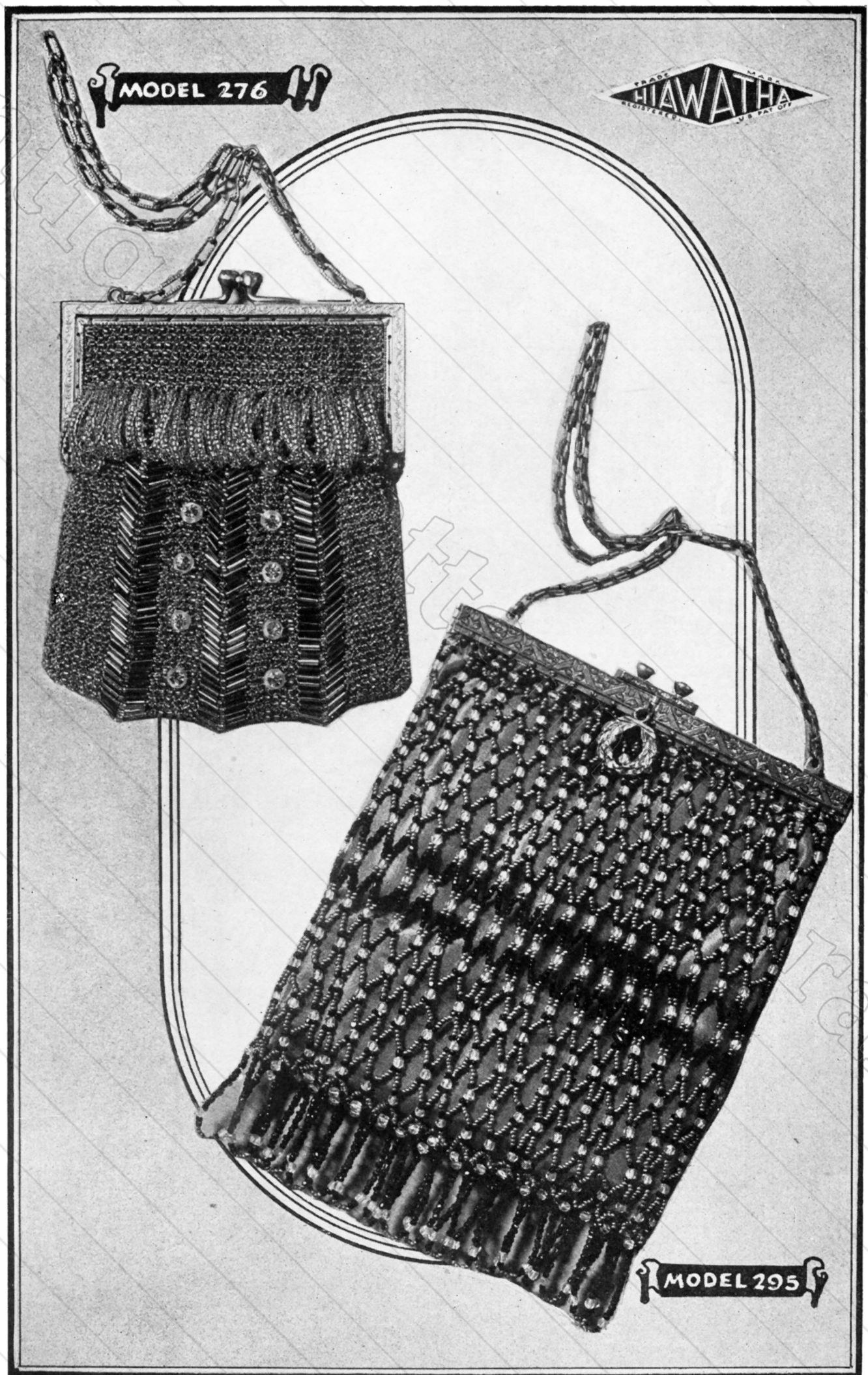
Next 10 ridges, widen 1 bd in each ridge instead of every other ridge, until there are 14 bds 1 st 14 bds in the two widening panels. Then knit 14 ridges of 15 bds 1 st 15 bds, making 40 ridges in all. This is one-half of the bag. The next three ridges form the bottom of the bag, with the fringe between the widening panels.

Ridge 41: Kn 1, sl 3 bds. Kn 3, cast off 2 sts (instead of the 4 bds). Kn 4, sl 15 bds. Kn 1, sl 15 bds. Kn 4, cast on 2 sts. Kn 4, sl 15 bds. Kn 1, sl 15 bds. Kn 4, cast on 2 sts. Kn 3, sl 3 bds. Kn 1. In knitting back kn 10 sts, sl 15 bds. Kn 1, sl 15 bds. Kn 10, sl 15 bds. Kn 1, sl 15 bds. Kn 10.

Ridge 42: Kn 1, sl 15 bds. Kn into next st, sl 15 bds. Kn into next st, etc., to end of needle. Back kn 10, sl 15 bds, 1 st, 15 bds. Kn 10, sl 15 bds, 1 st, 15 bds. Kn 10.

Ridge 43: Kn 1, sl 3 bds. Kn 3, cast off 2 sts. Kn 4, sl 15 bds. Kn 1, sl 15 bds. Kn 4, cast off 2 sts. Kn 4, sl 15 bds. Kn 1, sl 15 bds. Kn 4, cast o: 2 sts. Kn 3, sl 3 bds. Kn 1. Back kn 4, sl 4 bds. Kn 4, etc., as on back of ridge 40.

Proceed knitting other half of bag, 14 ridges of 15 bds width, decreasing toward top of bag. Sew sides of bag together up to the twelfth ridge, and sew into frame. Cast on 8 sts. Kn back plain. Kn 1, sl 1 bd. Kn 2, sl 1 bd. Kn 1, sl 1 bd. Kn 1, sl 1 bd. Kn 2, sl 1 bd. Kn 1. Knit back the same until 9 inches long. Bind off, leaving about six inches of silk. Slip end through the slot on frame and sew ends together with the six inch end of silk. For a binder to cover the seam, knit a plain strip. Cast on 6 sts, knit back plain for 1½ inches. Kn 2 sts together 3 times, back kn 2 sts together 3 times, pull thread through, leaving an end to sew with. Sew the beginning end of strip to the edge of strap and sew the point over, binding it around the double strap neatly. Do not sew through both sides of strap, or it cannot slide up and down.



"THE LATTICE BAG"—Model No. 295**MATERIALS**

- | | |
|---|---|
| 4 Bunches "Hiawatha" Gold Torse Beads No. 7 | 3129 |
| 3 Bunches "Hiawatha" Supercut Jet Beads No. 1007/10 | 1 "Hiawatha" Bag Frame No. 6438/5½ |
| 1 Bunch "Hiawatha" Crystallized Gems No. | 2 "Hiawatha" Beading Needles No. 16 |
| | 2 Spools "Hiawatha" White "Strong Silk" |

This effective gold, black and opal bag is easily made, as no knitting or crocheting is necessary. It will wear indefinitely if woven with "Hiawatha" Strong Silk.

Directions: Procure the frame before starting the bag, as there should be as many meshes around the bag as the spaces required for sewing the bag into the frame. This bag contains about 20 loops on each half, at top of bag, those toward the bottom being slightly larger than the top ones. String from top to bottom. Use as long a thread as can be handled, in order to avoid joining any oftener than necessary. When joining the thread, pass the new needleful through several of the beads on the last needleful nearly to the end of thread, tie end in a tight knot, push the heads up close, then tie the old end tightly on the new thread close up to last bead and proceed stringing as before.

To begin bag, tie a slip knot in the thread, leaving several inches hanging. String ** 1 black, 3 gold, 1 bl, 1 opal ** repeat from ** to ** once, then 1 bl 3 g 1 bl, pass thread through first opal, which makes a loop with an opal in the top. Repeat ** to ** three times, 1 bl 4 g 1 bl 1 opal twice, 2 g 5 bl 2 g 1 opal twice, 1 bl 5 g 1 bl 1 opal five times, 1 bl 5 g 1 bl thread through next to last opal, making a loop similar to the top one. Work back to the top as follows: ** 1 bl 5 g 1 bl 1 opal, 1 bl 5 g 1 bl thread through second opal on previous string **. Repeat from ** to **, 2 g 5 bl 2 g 1 opal, 2 g 5 bl 2 g. Thread through second opal, 1 bl 4 g 1 bl 1 opal, 1 bl 4 g 1 bl thread through second opal, 1 bl 3 g 1 bl 1 opal, 1 bl 3 g 1 bl thread through second opal.

There are now 5 meshes with a small loop at top and larger one at bottom. String 3 groups of beads as at the beginning to form another loop and proceed with the meshes, keeping the same count throughout the entire bag. When there are 20 loops in each half, at the top, or as many as the frame requires, finish the last line to the bottom, make the loop and then weave the two sides together toward top, from one opal across to the other joining the thread at the slip knot.

To join the bag at the bottom and make the fringe, match the first two loops together, tie thread through central gold bead in the side of both loops, string 1 inch of black bds 1 opal 2 bl 5 g 2 bl 1 opal, 1 inch of black, pass thread through 2 central gold bds in other side of two loops, string 1 bl pass thread through 2 gold in center of next two loops, make another loop of fringe, etc., across the bag.

To fasten the bag into the frame, make a slip knot on end of thread, string 1 bl 1 g 1 bl pass thread through first hole in frame of bag, putting needle up from the back of frame, string 1 g pass thread back through same hole, tie a slip knot tightly around thread with beads on, string 1 bl 1 g 1 bl thread through opal bead in loop 1 bl 1 g 1 bl thread through next hole in frame from the back, 1 g thread through same hole, tie knot, and continue joining bag to the frame in the same way. Line with silk.

"THE MINUET"—Model No. 276**MATERIALS**

- | | |
|---|--|
| 7 Bunches "Hiawatha" Beads No. 772 Gold or 400/1 Perelene | 1 "Hiawatha" Bag Frame No. 5861/4 |
| 4 Bunches "Hiawatha" Bugle Beads, to match color of beads | 1 Pair "Hiawatha" Knitting Pins No. 17 |
| 2 Dozen "Hiawatha" Jewels No. 3270 | 1 Pair "Hiawatha" Knitting Pin Protectors No. 93 |
| 1 Spool of Purse Twist | 2 "Hiawatha" Beading Needles No. 16 |

An attractive evening and dance bag combining jewels, bright beads and bugles. Its beauty is predominant but its simplicity and moderate cost are large factors in its popularity.

Directions: This bag is made in two sections, beginning to knit at the bottom of each section. A bugle group means 1 bugle, 1 bead, 1 bugle. String beads as follows: No. 70 cotton or sewing silk with a fine needle. **Sec. A:** 7 bds 1 bugle gr, 6 bds, 1 bugle gr, 6 bds, 1 bugle gr, 6 bds, 1 bugle gr, 7 bds 3 bugle groups. Repeat this five times, making six times in all. **Sec. B:** 7 bds, 1 bugle gr, 4 bds, 1 bugle gr, 4 bds, 1 bugle gr, 7 bds. Repeat once, repeat Sec. A 5 times and repeat Sec. B twice. Remove needle—tie thread to purse twist, and slide beads on to twist. Cast on 44 sts, kn 9, cast off 4, kn 7, cast off 4, kn 7, cast off 4, kn 9, 32 sts on needle.

Ridge 1: Kn 1, sl bd. Kn 2, sl bd. Kn 1 until you have six bds with 1 st between. Kn 1, sl bugle gr. Kn 1, sl bd six times, kn 1, sl bugle gr. Kn 1, sl bd six times. Kn 2, sl bd. Kn 1 knitting back, kn 9, sl bugle group. Kn 7, sl bugle group, kn 7, sl bugle gr, kn 9.

Ridges 2, 3, 4, 5 and 6: As Ridge 1.

Ridge 7: Kn 1, slip bd. Kn 2, sl bd. Kn 1 six times, sl bugle gr, sl bd. Kn 1, sl bd. Kn 3, sl bd. Kn 1, sl bd. Kn 1, sl bugle group. Kn 1, sl bd. Kn 1, sl bd. Kn 3, sl bd. Kn 1, sl bd. Kn 1, sl bugle group. Kn 1, sl bd six times. Kn 2, sl bd. Kn 1. Knitting back as Ridge 1.

Ridge 8: Like Ridge 7.

Ridges 9, 10, 11, 12 and 13: As Ridge 1.

Ridges 14, 15: As Ridge 7.

String Sec. A 5 times, Sec. B twice, Sec. A 4 times, Sec. B twice, Sec. A 4 times, Sec. B twice and Sec. A once.

Ridges 16, 17, 18, 19 and 20: Like Ridge 1

Ridges 21 and 22: Like Ridge 7.

Ridges 23, 24, 25 and 26: Like Ridge 1.

Ridges 27 and 28: Like Ridge 7.

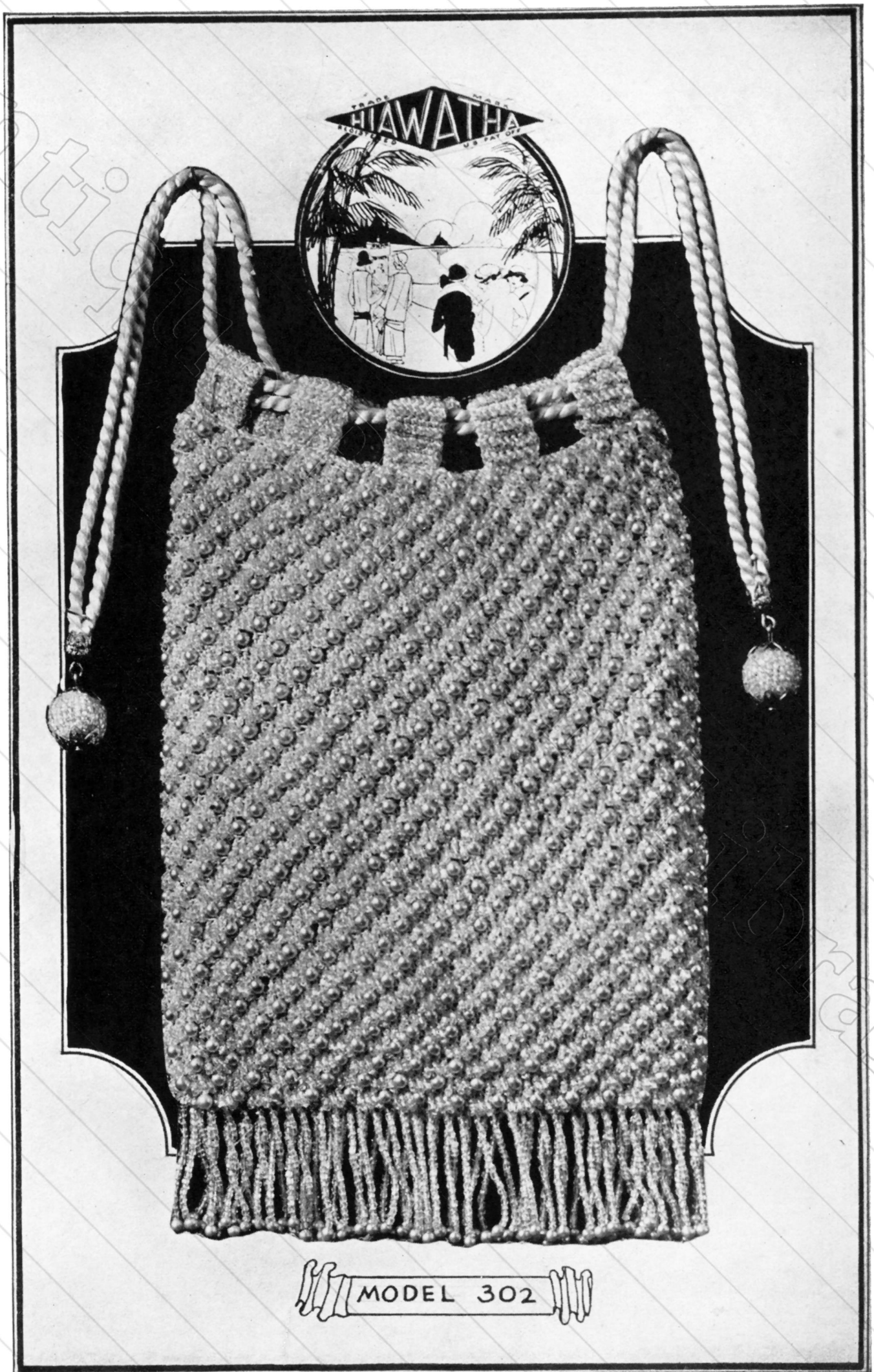
String 1½ bunches small bds. Then six small bds, 1 bugle group, six small bds, 1 bugle gr, six small bds, 1 bugle gr, six small bds, 3 bugle groups, 5 times to make 5 ridges.

Ridges 36, 37, 38, 39 and 40: Like Ridge 1, but leaving out the single bead on each end and knitting 3 sts plain.

Ridge 41: Kn 3, 1 bd, 1 st six times, cast on 2 sts tightly. Kn 1, sl bd. Kn 1 six times, cast on 2 sts. Kn 1, sl bd. Kn 1 six times. Kn 2 on end, 38 sts on needle.

Ridge 42: Kn 3 sts drop a loop of fringe 1¾ inches long after each stitch, excepting last 3 on end. Knit back plain.

Ridge 43: Kn 3 sts plain, sl bd after every stitch except last 3. Knit back plain. Kn 7 more ridges the same. Knit two plain ridges, and cast off loosely. Sew ten jewels in the squares made for them. Make the other side.



"PEARL and CRYSTAL"—Model No. 302**MATERIALS**

- | | |
|---|-------------------------------------|
| 15 Bunches "Hiawatha" Superfine Crystallized Gems No. 21/10. | 1 "Hiawatha" Crochet Hook No. 9 |
| 2½ Strings "Hiawatha" Indestructible Pearls No. 5910 | 2 "Hiawatha" Beading Needles No. 16 |
| | 1 "Hiawatha" White Bag Cord No. 725 |
| | 2 Spools White Purse Twist |

White, with the softness of pearls and the brilliant glittering of its crystallized gems, this pouch bag has already become one of the most popular bags of its type ever produced.

Directions: In stringing the beads for this bag, it is advisable to select the larger sizes of pearls for the crocheted part, leaving the smaller ones to use in the fringe. String 9 crystal, 1 pearl, until about two or three bunches of crystal beads have been used. This bag is crocheted from the bottom up. Crochet 73 chain sts, 1 s c in each chain to the end and back along the other side of chain, making about 148 sts. This forms the bottom of the bag onto which the fringe is sewed later on.

Second Row: 3 d c into 3 s c with 3 bds in each d c (thread over hook, draw through, slip 3 bds, draw through again) slip 1 pearl, skip 1 s c and fasten into second s c with a s c. Repeat around the entire row of singles. There should be 29 clusters of crystal beads and 29 pearls in the row. The next row should be made so that the pearls are above the crystal cluster in the preceding row.

Continue until there are 34 rows. Finish top with one row of s c with 1 bead in each stitch. To make tabs for drawstrings, string 1 bunch of crystal beads, crochet 9 chains, 1 row s c. Next row singles, 1 bead in each stitch, 7 beads across. Repeat until there are 10 rows of beads. Finish with 1 row of s c plain. Make 10 of these tabs, sew one end on to bag one-half inch apart, lay drawstrings between and sew the other end of tabs over.

To make fringe, fasten thread at one corner of the bag, and string 20 crystal beads (or 1¼ inches), 3 pearls, 20 crystals, and sew into every second stitch, across bottom of bag. There should be about 35 loops of fringe.

THE GOLDENROD Model D293—Continued from Page 5

Ridge 30: Widen to 7 bds.

Ridge 31: Widen to 8 bds and reduce the two stripes between the widening panels of kn 2 sts, sl 2 bds, kn 2 sts, sl 2 bds, kn 2 sts, to 2 sts, 2 bds, 1 st, 2 bds, 2 sts, by knitting the 2 central sts together. Continue to add 1 bd. to each R in the 3 widening panels, until there are 25 bds at Ridge 48. But at Ridge 35, narrow the two stripes between the panels again by reducing the 2 bd groups to 1 bd. Again at Ridge 40, reduce to kn 2 sts, sl 2 bds, kn 2 sts, together, kn 1 st.

Ridges 48, 49 and 50: Should be 25 bds wide. This completes half the bag. Reverse the work for the other half, remembering to widen the stripes at Ridges 40, 35 and 31, and to omit the 1 bd on each end of needle at Ridge 28. In order to change from the 2 inch bead panel, back to the beaded yoke, work as follows:
Ridge 18: Kn 3 sts, sl 2 inches bds, kn 2 sts, sl 1 bd, kn 1 st, for 17 bds, kn 2 sts, sl 2 inches bds kn 3. Back, kn 3 sts, sl 2 inches bds, kn 20 sts, sl 2 inches bds. Cast off the 3 sts on end, cut thread and pull through last stitch dropping the 2 inch panel free.

Ridge 17: Cast on 11 new sts on the empty needle, kn together this 11th st and the first st on the full needle, kn 1 st, sl 1 bd for 17 bds, kn 2 sts, sl 2 inches bds, cast off 3 sts on end, cut thread and pull through last st. Cast on 10 sts on full needle, knit back across needle, 40 sts on needle. Proceed with 16 ridges of single bds with 3 pl sts on end.

To form the bag, lay the 3 st border of the bead panel on top of the 3 st border on end of yoke, fastening the first ridge of bead panel at 4th bd ridge from top of yoke, bottom of yoke extending to 1 bd border on panel. Sew edges together, stretching slightly so that the 3 stitch edge will extend to bottom of frame. Sew the sides together along the one bead edge.

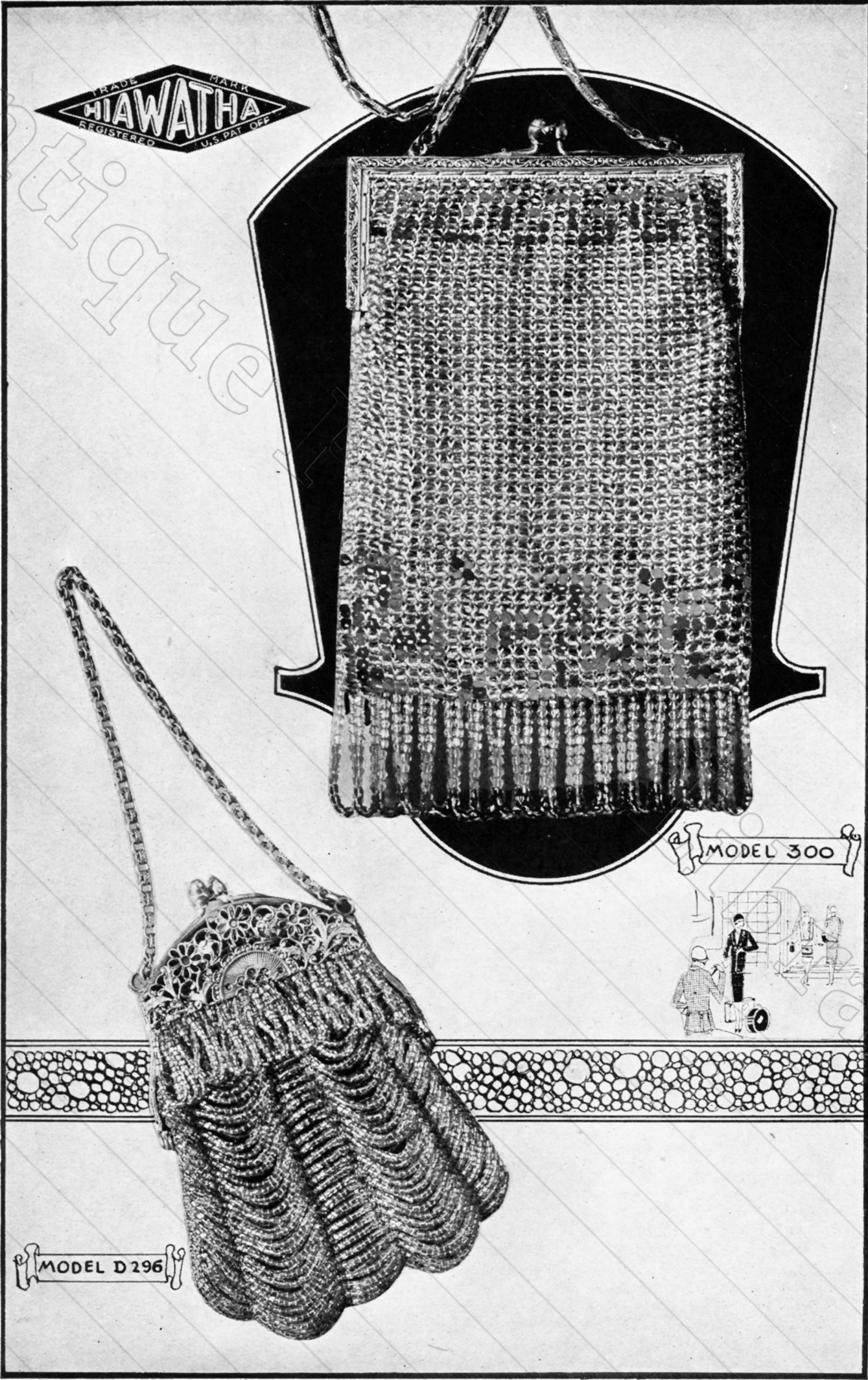
Sewing Beads On To Frame: Thread needle with silk and fasten into the little ring into the bottom ring on the side of the frame to which the mesh is attached. String 2½ inches of beads and fasten into the lowest ring at corner side of mesh. Make a knot st. Pass silk into next upper ring in side of mesh, then into second ring, string 2 inches of beads and fasten into second ring of mesh from top string of beads. Pass silk down through one ring into second ring. String 1½ inches beads and fasten into second ring, above previous loop. Continue in this fashion until there are five loops of beads. Make knot and cut silk.

Make the other sloping side of mesh the same.

For the bottom edge of curtain, fasten silk into the same ring with the longest side loop. String 1½ inches beads, fasten into seventh or middle ring, pass to the next inside ring, string 1⅛ inches of beads, fasten across to fifth ring, pass to next inside ring, string ¾ inch beads, fasten to third ring, pass to next ring, string six beads, fasten to remaining string. This completes one cluster.

Pass silk along to center ring and make a similar cluster on the other half.

Repeat loops on other side of frame. Sew bag into frame.



"SPRING BEAUTY"—Model No. 300**MATERIALS**

- | | |
|---|--|
| 1 Bunch "Hiawatha" Crystal Flame Gems No. 36/20 | 1 "Hiawatha" Bag Frame No. 5861/4½ |
| 1 Bunch "Hiawatha" Crystal Flame Gems No. 36/3. | 1 Pair "Hiawatha" Knitting Pins No. 15 |
| 4 Bunches "Hiawatha" Crystal Flame Gems No. 36/15 | 1 Pair "Hiawatha" Knitting Pin Protectors No. 93 |
| | 1 Spool White Purse Twist |
| | 2 "Hiawatha" Beading Needles No. 16 |

Directions: String 1 bunch of the opalescent beads, then the small design, beginning on the bottom line of the design, 3 black, 2 opal, etc., taking each line from beginning to end, the fourth, third, second, and first, ending with 2 green. Then string 28 opalescent beads and begin to knit.

Cast on 31 sts. Knit 2 ridges plain. Next ridge Kn 2 sts plain, sl 1 bd. Kn 1 st across needle, 2 sts plain on end. Knit back plain. The entire bag is knitted in the same manner, always knitting back plain on every ridge. The next four ridges make the small design for the top of bag, knitted as the first ridge of beads, 2 pl sts at beginning and end of each row, and 1 bd, 1 st across. Knit 6 ridges with the opal beads. In knitting back plain on the sixth ridge, increase 1 st on each end of needle, making 33 sts.

Next ridge, begin 1 st, 1 bd, etc., with only 1 st on end of needle and 32 bds across. Continue until there are 16 ridges of these, making 22 ridges of the one color below the design. Cut the thread and string beads for large design, and fringe as follows: String large design beginning at top of design, then 32 opal bds, then bds for fringe as follows: 5 opal, 4 green, 7 blue, 4 green, 5 opal—17 times. Then 32 more opal bds. Then the large design again, beginning at the bottom and stringing toward the top. Join the thread to work, and proceed to knit large design, then one row of opal bds. Back plain, 1 st, 1 loop of fringe into next st, 1 st loop of fringe into next st, etc., knitting last loop into last st. Back plain. 1 ridge opal bds large design toward top. Then string beads for plain part. Knit 16 ridges of 32 bds each. In knitting back, decrease 1 st on each end of needle. Next ridge 2 sts plain, 28 bds, 2 sts plain on end for 6 ridges. String 28 opal bds small design beginning at top of design. Knit from bottom up to top. Knit 2 ridges without beads and bind off loosely. Sew sides together up to the 2 plain sts.

LARGE DESIGN—32 BEADS ACROSS

```

G G G G G O O O B G O O O G G G G G O O O B G O O O G G G G G O
O O B B G G O O G B O O O O O B B G G O O G B O O O O O B B G G
O O O B G G O O O O O G G O O O B G G O O O O O G G O O O B B G G
G G O B G O O G O O G G G G G O B G O O G O O G G G G G O B G O
B G O G G O O G O O G B B B G O G G O O G O O G B B B G O G G O
O O G O O O B G O O G B O O O B O O B G O O G B O O O B O O O
G G O G B B B G O O G O O G G O G B B B G O O G O O G G O G B B
G B O G G G G G O O G O O G B O G G G G G O O G O O G B O G G G
G B O O O G G O O O O O G G B O O O G G O O O O O G G B O O O G
G B B O O O O O B G O O G G B B O O O O O B G O O G G B B O O O
O G G G G G O O O G B O O O G G G G G O O O G B O O O G G G G G

```

SMALL DESIGN—28 BEADS ACROSS

```

O G G G O O G G G O O G G G O O G G G O O G G G O O G G
O G O O B O G O O B O G O O B O G O O B O G O O B O G O
O O B O B O O B O B O O B O B O O B O B O O B O B O B
B B B O O B B B O O B B B O O B B B O O B B B O O B B B

```

G—For Green

O—For Opalescent

B—For Blue

"THE CHARLESTON"—Model No. D-296**MATERIALS**

- | | |
|---|--|
| 11 Bunches "Hiawatha" Rain-Lite Gems No. 33 | 1 Pair "Hiawatha" Knitting Pin Protectors No. 93 |
| 1 "Hiawatha" Bag Frame No. 6458 | 2 Beading Needles No. 16 |
| 1 Pair "Hiawatha" Knitting Pins No. 17 | |
| ½ Spool Purse Twist | |

Directions: Cast on 30 sts. Knit back plain. Knit 2 more ridges. Knit 2 sts plain, drop a loop of fringe 1¼ inches long after each stitch, across last 2 sts plain. Knit back plain.

Knit 3, slip 3 bds. Kn 2, bind off 8 sts (remember to knit the second stitch before binding off, as otherwise you will take away one of the two stitches you should have on the needle after the two beads are slipped). Kn 2, sl 3 bds. Kn 2. Bind off 8 sts. Kn 2, sl 3 bds. Kn 3 sts. In knitting back slip the 3 bds where they are in preceding row, also slip 1¼ inches of beads in the space where you have bound off the 8 stitches in the 2 places. This 1¼ inches of bds is best handled by cutting a hem-measure of this length and using same each time, as it goes faster and is much more accurate than counting the beads.

After passing about the 10th ridge, one bead is slipped in after the first stitch and just before the last stitch on each row on both sides of bag. (This 1 bead in the first ten ridges is left off in order to have a flat surface to sew to frame on sides of bag.)

Remembering there are 3 sts on each edge for the first ten ridges and after that one stitch and 1 bead, and two sts on the needle between all panels or lines of beads, slip bds as in following chart:

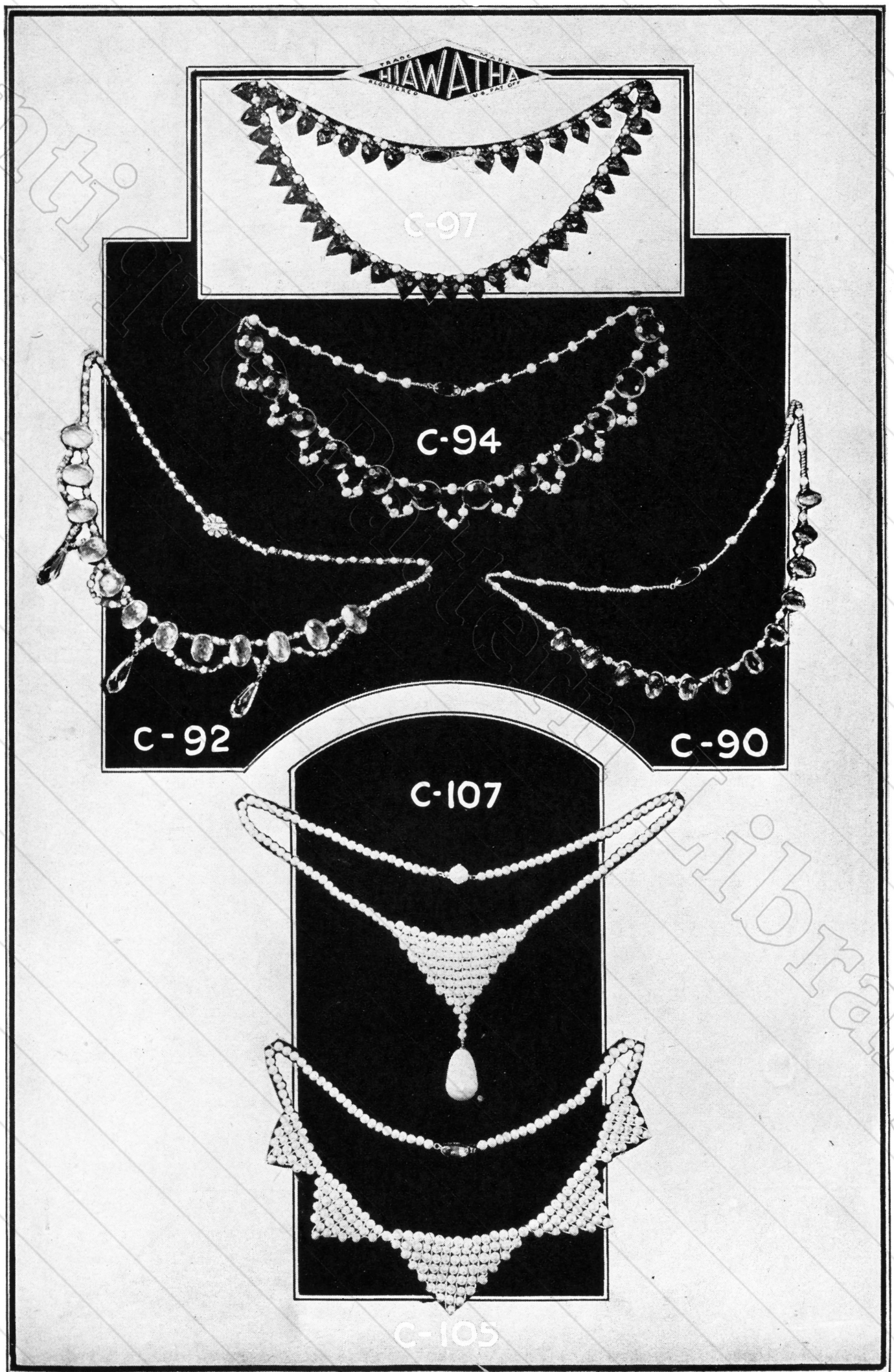
Ridges**Beads**

| | | |
|---------------------------|---------------|---------|
| 2 Ridges of 3 bds 1¼ in. | 3 bds 1¼ in. | 3 bds. |
| 2 Ridges of 4 bds 1¼ in. | 4 bds 1¼ in. | 4 bds. |
| 3 Ridges of 5 bds 1¼ in. | 5 bds 1¼ in. | 5 bds. |
| 2 Ridges of 6 bds 1¼ in. | 6 bds 1¼ in. | 6 bds. |
| 1 Ridge of 7 bds 1¼ in. | 7 bds 1¼ in. | 7 bds. |
| 1 Ridge of 8 bds 1¼ in. | 8 bds 1¼ in. | 8 bds. |
| 9 Ridges of 9 bds 1¼ in. | 9 bds 1¼ in. | 9 bds. |
| 4 Ridges of 10 bds 1¼ in. | 10 bds 1¼ in. | 10 bds. |
| 3 Ridges of 11 bds 1¼ in. | 11 bds 1¼ in. | 11 bds. |
| 5 Ridges of 12 bds 1¼ in. | 12 bds 1¼ in. | 12 bds. |

} 1 Bead on edges

32 Ridges—One-half the bag.

You will observe that only 3 panels of beads increase in width as bag progresses, the other two remaining the same.



The latest fashions emphasize these lovely festoons, and they are refreshingly different from the average necklace worn. Made in any color or combination to suit the individual taste, just the thing for that little gift you may want to give.

Model C90**MATERIALS**

- | | |
|--|---------------------------------------|
| 12 "Hiawatha" Jewels No. 3507 or 3507½ | 1 Bunch Real Gold Lined Beads No. 771 |
| ¼ String Pearl Beads No. 5910 | 1 Catch No. 3689 |
| 1 Bunch Gold Torse Beads No. 7 or | 1 "Hiawatha" Restraining No. 63 |

Directions: Attach clasp. String 8 gold bds and 1 pearl. Repeat this for 7 more times, then string through 1 hole in jewel. String 2 gold bds, 1 pearl, 2 gold bds. Continue making balance of necklace the same.

Model C97**MATERIALS**

- | | |
|---|--------------------------|
| 3½ Dozen "Hiawatha" Heart Pendants No. 3766 | ¼ String Pearls No. 5910 |
| 1 Bunch No. 7 Gold Torse Beads | 1 Catch No. 3688 |
| 1 "Hiawatha" Restraining No. 63 | |

Directions: Attach catch. String as follows: 1 torse bd, 1 pearl, 1 bd, 1 pendant. Continue across in this manner for 14¼ inches.

Model C92**MATERIALS**

- | | |
|---|---------------------------------|
| 12 "Hiawatha" Brilliante Jewels No. 3507½ | 3 Pendants No. 3504 |
| ½ String Pearl Beads No. 5910 | 1 Catch No. 3686 |
| 1 Bunch Cut Gold Beads No. 771 | 1 "Hiawatha" Restraining No. 63 |

Directions: Attach catch. String 1 pearl, 2 bds, for 17 times. Pass needle through one hole in jewel and string 2 bds, 1 pearl, 2 bds. Continue making balance the same. Note illustration. Attach other end of clasp and break thread. Make a knot on end of thread and pass needle through pearl bead next to jewel on left hand side. String 2 bds, and pass needle through bottom hole in jewel. String 2 bds, and 1 pearl for 5 times ending with 2 bds. Pass needle through bottom hole of third jewel from left. String 2 bds, 1 pearl, 2 bds, and pendant. Pass needle back through last bead and string 1 bd, 1 pearl, 2 bds. Continue in this manner as illustrated.

Model C94**MATERIALS**

- | | |
|--|---------------------------------|
| 12 "Hiawatha" Brilliante Jewels No. 3509 | 1 Clasp No. 3688 |
| 1 Bunch Gold Torse Beads No. 4 | 1 "Hiawatha" Restraining No. 63 |
| ½ String Pearl Beads No. 5910 | |

Directions: Attach clasp. String 1 pearl, 4 torse beads. Continue this combination for 8 more times. Pass needle through a hole in jewel and string 2 torse, 1 pearl, 2 torse. Continue making balance of necklace same as illustrated. In coming back for second row, string 2 torse, 1 pearl, 2 torse, 1 pearl, 2 torse, 1 pearl, 2 torse between each jewel as illustrated.

Model C107**MATERIALS**

- | | |
|-----------------------------|-------------------------------|
| ½ String of No. 5910 Pearls | No. 16 "Hiawatha" Bead Needle |
| 1 Pearl Clasp No. 6366 | 1 Spool "Strong Silk" |

Directions: String 14½ inches of pearl beads. Tie catch on one end securely, by passing end of thread back through two or three beads, tie a knot, pass thread through two more beads, tie a knot, through two more and cut off thread. Tie the other end but don't cut off the thread as it may be necessary to tighten up the beads when the work is finished.

Work the triangle on the 17 central beads. Tie on the thread and pass the needle through the first of the 17 central beads, string 1 bd pass needle through the 15th bd, string 1 bd pass needle through 13th bd and so on, until there are 8 bds in the second row, tie a knot, pass thread through last bead strung, string 1 bd and pass thread through every other bd until all empty spaces are filled. There are now 15 bds above needle. Then through the second bd of the lower row. String next row like the second 13 bds in row when completed.

Continue with fourth row, 11 beads in row, 5th row containing 9 beads, 6th row of 7 beads, 7th row of 5 beads, 8th row of 3 beads, and for the point, string four beads and pendant, pass thread back 3 beads, string another bd pass thread through 2nd bd on 8th row, tie a knot, pass the thread through first bead, tie another knot and cut the thread.

Model C105**MATERIALS**

- | | |
|--|-----------------------------------|
| 1 String of 60 inch Pearl Beads No. 5910 | No. 16 "Hiawatha" Beading Needles |
| 1 Pearl Clasp No. 6366 | 1 Spool "Strong Silk" |

Directions: String 14½ inches of pearl beads. Tie catch on one end securely by passing end of thread back through two or three beads and tie a knot, through two more beads, tie a knot, through two more and cut off. Tie the other end into the other part of the clasp, but do not cut off the thread, as it may be necessary to tighten up beads when work is finished. Work the large triangle first on the 15 central bds tie on the thread, and pass needle through the first bead of the 15, string 1 bd pass needle through 13th bd string 1 bd thread through 11th bead and so on until there are 7 bds in the lower row and tie a knot. Pass thread through last bead strung. String one bd and pass thread through every other bead until all empty spaces are filled. There are now 13 bds in the second row. Pass thread back through two top bds above needle, then through the second bead of the lower row, and string next row like the second, 11 beads in row when completed.

Continue with the 4th row, 9 beads in row, 5th row containing 7 beads, 6th row of 5 bds, 7th row of 3 bds, finishing with 1 bd for the point. Make a smaller triangle on each side of the large one, consisting of five rows besides the point, 9, 7, 5 and 3 bds in each row respectively, and smaller points outside of these, with 7, 5, 3 and 1 bd in each row respectively. Now make the chain the same length on the unfinished end as the finished end, and tie securely into the catch.



Illustrated above are the latest bags that can be easily made by simple embroidery on
 Page 24 Hiawatha stamped patterns. No knitting or crocheting necessary
www.antiquepatternlibrary.org 2019.07

BEADED ASH TRAY STRAP—Model No. C110

The latest fashion for the home, produced in blended combinations of beads, with a cut glass, jeweled ash-tray. A serviceable and attractive article, that is easily made by simple knitting.

MATERIALS

- | | |
|---|---|
| 2 Bunches "Hiawatha" Silver Glo Gems No. 3236/3 | 93 |
| 1 Bunch "Hiawatha" Silver Glo Gems No. 3236/15 | 2 "Hiawatha" Beading Needles No. 16 |
| 1 Pair "Hiawatha" Knitting Pins No. 15 | 2 25 Yard Spools Red Purse Twist |
| 1 Pair "Hiawatha" Knitting Pin Protectors No. | ½ Yard Velvet Ribbon |
| | 2 "Hiawatha" Ornaments No. X4200 |
| | 1 "Hiawatha" Ash Tray and Holder No. 6459 |

Directions: String 1 black, 2 amber, 2 black, 4 amber and push along thread out of the way. Then string the following pattern: 2 bl 2 a 2 bl 4 a four times; 2 bl 2 a 1 bl 3 a once; 2 bl 2 a 7 times; 2 bl 3 a 1 bl 2 a 2 bl 4 a. Repeat this pattern four more times.

Cast on 18 sts loosely. Knit back plain. Ridge 1 with beads. Kn 2, sl 1 bd. Kn 1, sl 1 bd. Kn 1, sl 1 bd. Kn 1, sl 1 bd. Kn 1, sl 1 bd. Kn 4. Kn 1, sl 1 bd. Kn 1, sl 1 bd. Kn 1, sl 1 bd. Kn 1, sl 1 bd. Kn 5. Always knitting back plain.

Ridge 2: Kn 2, 1 bd, 1 st, 1 bd, 1 st, 1 bd, 1 st, 1 bd, 4 sts, 1 bd, 1 st, 1 bd, 1 st, 1 bd, 1 st, 1 bd, 4 sts, 1 bd, 2 sts.

Ridge 3: Kn 2, 1 bd, 1 st, 1 bd, 1 st, 1 bd, 4 sts, 1 bd, 1 st, 1 bd, 1 st, 1 bd, 1 st, 1 bd, 4 sts, 1 bd, 1 st, 1 bd, 2 sts.

Ridge 4: Kn 2, 1 bd, 1 st, 1 bd, 4 sts, 1 bd, 1 st, 1 bd, 1 st, 1 bd, 1 st, 1 bd, 1 st, 1 bd, 4 sts, 1 bd, 1 st, 1 bd, 2 sts.

Ridge 5: Kn 2, 1 bd, 4 sts, 1 bd, 1 st, 1 bd, 1 st, 1 bd, 1 st, 1 bd, 4 sts, 1 bd, 1 st, 1 bd, 1 st, 1 bd, 4 sts, 1 bd, 2 sts.

Ridge 6: Kn 5, 1 bd, 1 st, 1 bd, 1 st, 1 bd, 1 st, 1 bd, 4 sts, 1 bd, 1 st, 1 bd, 1 st, 1 bd, 1 st, 1 bd, 4 sts, 1 bd, 2 sts.

Ridge 7: Kn 2, 1 bd, 4 sts, 1 bd, 1 st, 1 bd, 1 st, 1 bd, 1 st, 1 bd, 4 sts, 1 bd, 1 st, 1 bd, 1 st, 1 bd, 4 sts, 1 bd, 2 sts.

Ridge 8: Kn 2, 1 bd, 1 st, 1 bd, 4 sts, 1 bd, 1 st, 1 bd, 1 st, 1 bd, 1 st, 1 bd, 1 st, 1 bd, 4 sts, 1 bd, 1 st, 1 bd, 2 sts.

Ridge 9: Kn 2, 1 bd, 1 st, 1 bd, 1 st, 1 bd, 4 sts, 1 bd, 1 st, 1 bd, 1 st, 1 bd, 1 st, 1 bd, 4 sts, 1 bd, 1 st, 1 bd, 2 sts.

Ridge 10: Kn 2, 1 bd, 1 st, 1 bd, 1 st, 1 bd, 1 st, 1 bd, 4 sts, 1 bd, 1 st, 1 bd, 1 st, 1 bd, 4 sts, 1 bd, 1 st, 1 bd, 2 sts.

This completes the pattern once. Repeat R 1 to 10 inclusive, four times more, and then repeat R 1. Knit back plain.

To knit the point, R 1 Kn 2 together, 14 sts plain, 2 together, Kn back plain. R 2, Kn 2 together 12 sts plain, 2 together. Back plain. R 3, Kn 2 together, 10 sts plain, 2 together, back Kn 2 together, 8 sts plain, 2 together. R 4, Kn 2 together, 6 sts plain, 2 together, back, 2 together, 4 plain, 2 together. R 5, Kn 2 together, Kn 2 together, back, Kn 2 together, Kn 1, pull thread through, leave several inches to attach ornaments and tassel.

String beads and knit the other half of strap. To make the tassel: Take about 1½ yds. of thread on needle. String 10 a, 3 bl, 5 a, 3 bl, push nearly to end of thread, pass needle back through all the bds excepting the last three back ones, pull these up into a loop, tie thread into a knot. Make 9 or 10 of these, pushing each string of beads up close to the preceding one. Sew together in a cluster so that they will hang evenly, and tie ends into a tight knot. Thread the silk end at knitted point into a needle, pass through the ornament and the knot of the tassel, back through the ornament, draw up tightly to point and sew securely.

Cut two pieces of narrow feather bone 1⅞ inches long, sew on back of last row of beads at points to keep ends stiff. Place one knitted piece on back of ribbon velvet at one end, turn end of velvet under and sew into knitted piece, to cover featherbone.

Measure 6½ inches along the velvet, fit knitted piece along this length, and sew into place. Leave 1½ inches plain on velvet and sew the other knitted strip on 6½ inches. Turn the end of velvet that remains back on to itself, finish end and sew edges together, to make pocket for matches.

Diagram of colors for patterns, X designating Amber, O designating Black, S designating Stitch:

| | | | | | | | | | | | | | | | | | | | | | | | | | | | |
|-------|---|---|---|---|---|---|---|---|---|---|---|---|---|---|---|---|---|---|---|---|---|---|---|---|---|---|---|
| R 1— | S | S | X | S | X | S | X | S | X | S | O | S | S | S | S | O | S | X | S | X | S | O | S | S | S | S | S |
| R 2— | S | S | X | S | X | S | X | S | O | S | S | S | S | O | S | X | S | X | S | O | S | S | S | S | O | S | S |
| R 3— | S | S | X | S | X | S | O | S | S | S | S | O | S | X | S | X | S | O | S | S | S | S | O | S | X | S | S |
| R 4— | S | S | X | S | O | S | S | S | O | S | X | S | X | S | O | S | S | S | O | S | X | S | X | S | X | S | S |
| R 5— | S | S | O | S | S | S | S | O | S | X | S | X | S | O | S | S | S | O | S | X | S | X | S | X | S | S | S |
| R 6— | S | S | S | S | S | O | S | X | S | X | S | O | S | S | S | O | S | X | S | X | S | X | S | X | S | S | S |
| R 7— | S | S | O | S | S | S | O | S | X | S | X | S | O | S | S | S | O | S | X | S | X | S | X | S | S | S | S |
| R 8— | S | S | X | S | O | S | S | S | O | S | X | S | X | S | O | S | S | S | O | S | X | S | X | S | S | S | S |
| R 9— | S | S | X | S | X | S | O | S | S | S | S | O | S | X | S | X | S | O | S | S | S | S | O | S | X | S | S |
| R 10— | S | S | X | S | X | S | X | S | O | S | S | S | S | O | S | X | S | X | S | O | S | S | S | S | O | S | S |

