

10 francs par an pour Paris

MAGASIN DES DEMOISELLES

12 francs pour les Départements

N° 24

N° 25

N° 26

N° 27

N° 28

Bureaux du Journal PARIS Rue Laflitte, N° 51.

1871 - 1872







**Title:** A-MH048.24  
**Author:** Antique Pattern Library  
**Company:** New Media Arts, Inc.  
**Copyright:** Creative Commons 4.0 NC SA BY  
Free distribution only – NOT FOR SALE  
**Grid Size:** 139W x 139H  
**Design Area:** 25,22 cm x 25,22 cm (139 x 139 stitches)

### **Legend: Stitches**

•	DMC Cotton White	white
◀▶	DMC Cotton 798	delft blue - dk
⌘	DMC Cotton 3816	celadon green
≈	DMC Cotton 807	peacock blue
✕	DMC Cotton 666	christmas red - br
//	DMC Cotton 415	pearl gray
☼	DMC Cotton 444	lemon - dk

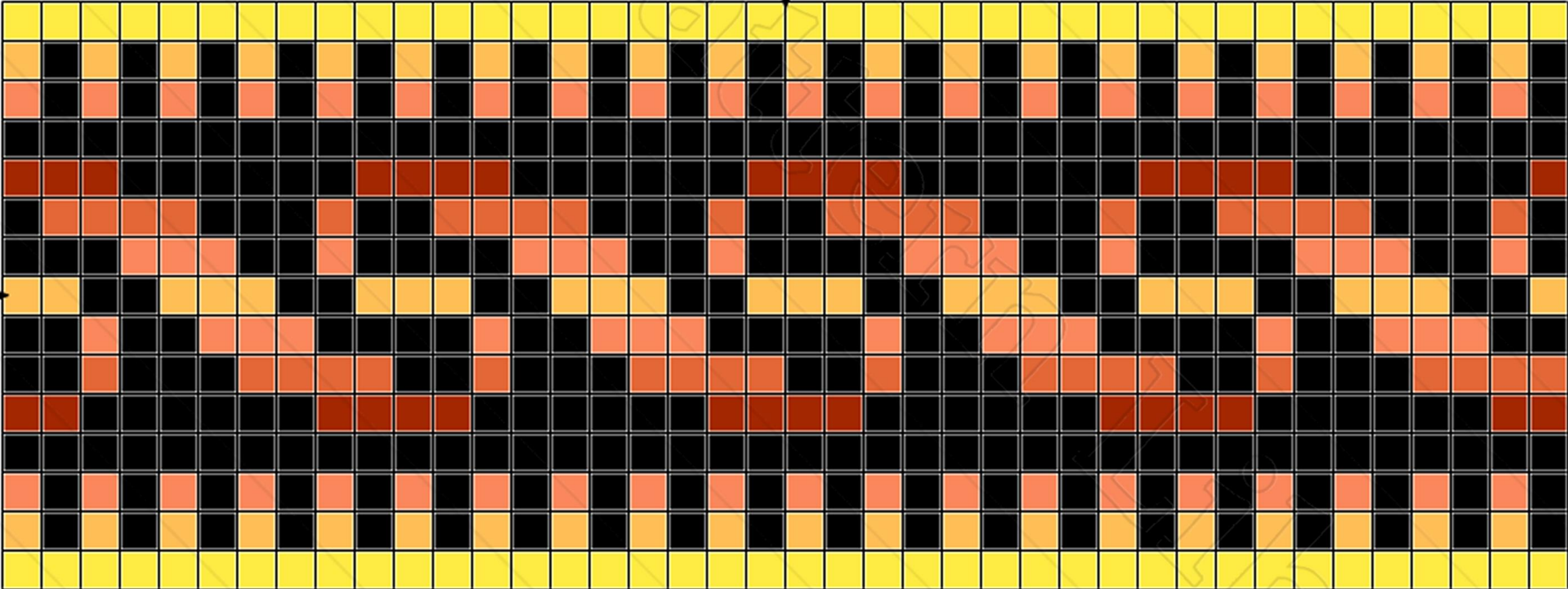
10

20

30

40

10



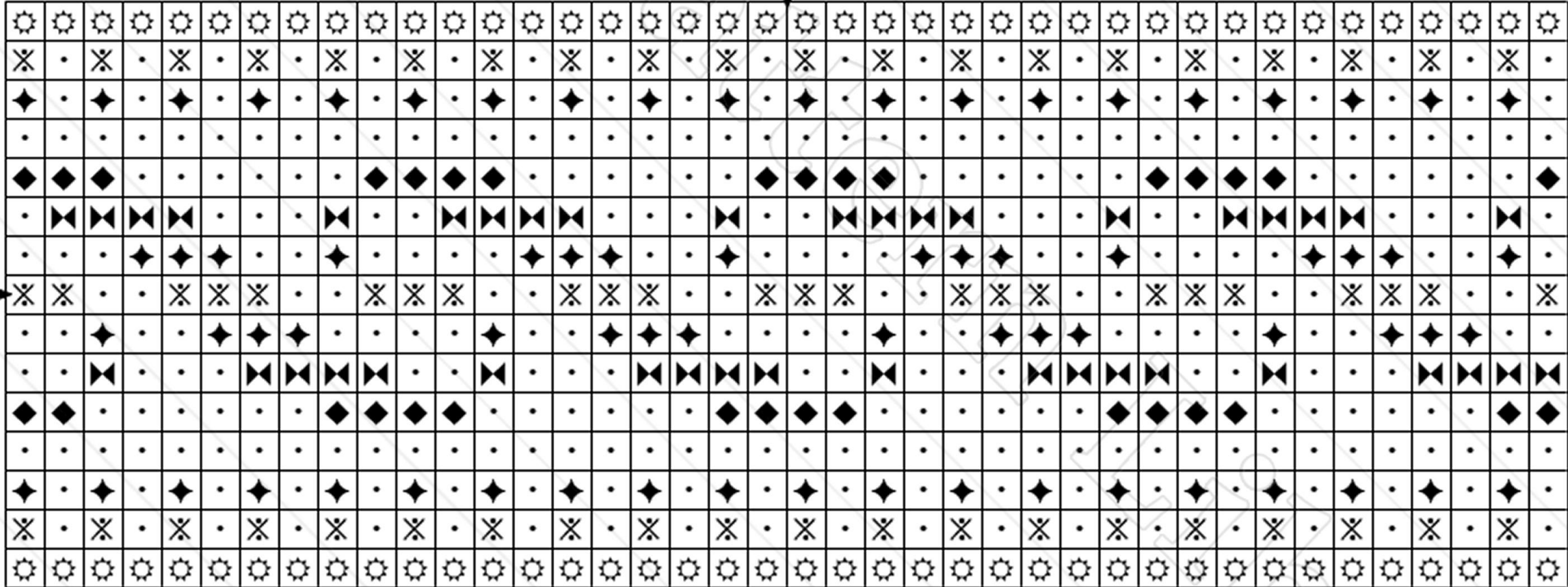
10

20

30

40

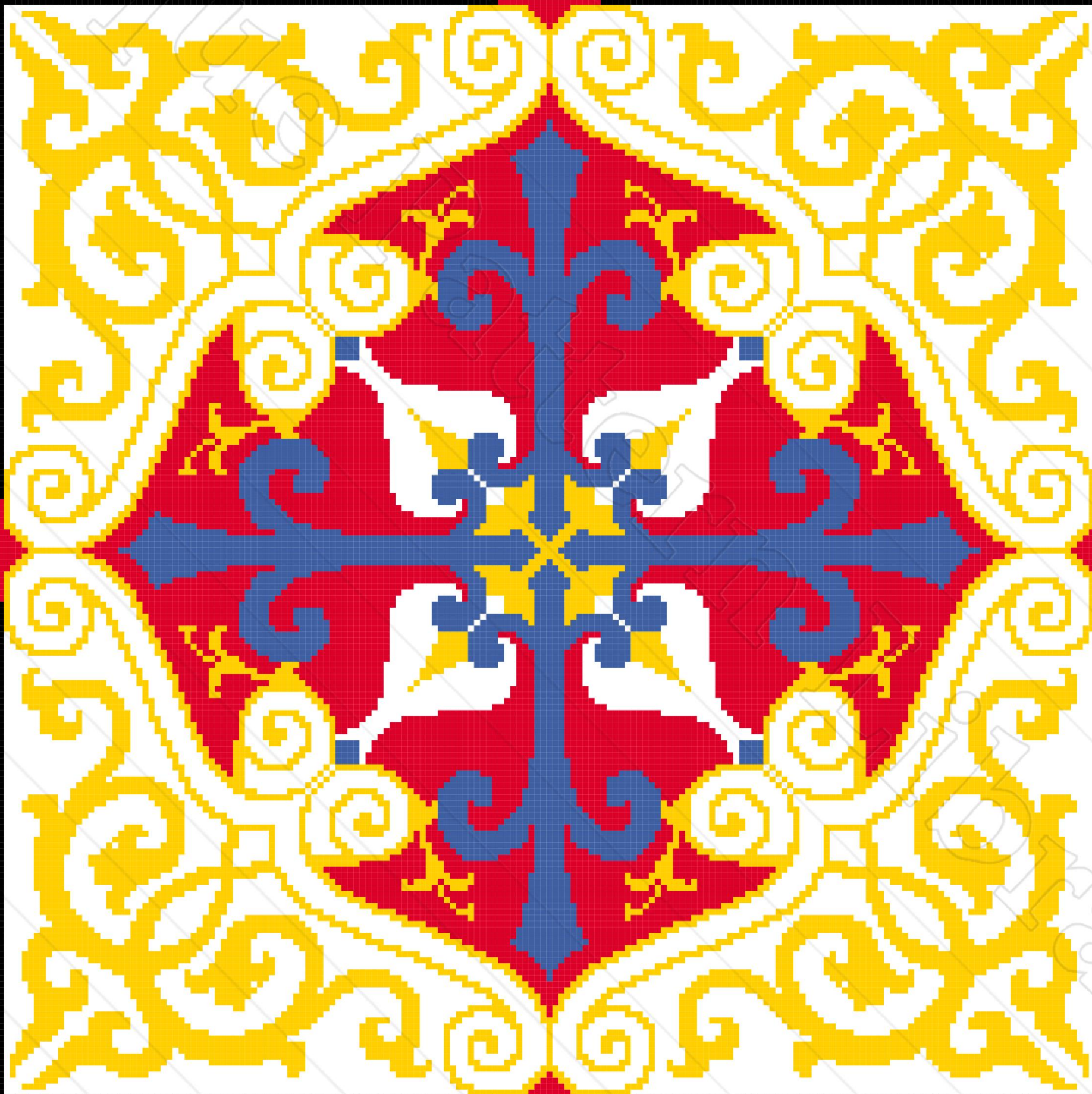
10



**Title:** A-MH048.25  
**Author:** Antique Pattern Library  
**Company:** New Media Arts, Inc.  
**Copyright:** Creative Commons 4.0 NC SA BY  
Free distribution only – NOT FOR SALE  
**Grid Size:** 40W x 15H  
**Design Area:** 7,26 cm x 2,72 cm (40 x 15 stitches)

**Legend: Stitches**

•	DMC Cotton 310	black
☼	DMC Cotton 307	lemon
◆	DMC Cotton 3340	apricot - md
✂	DMC Cotton 921	copper
✂	DMC Cotton 742	tangerine - lt
◆	DMC Cotton 918	red copper - dk







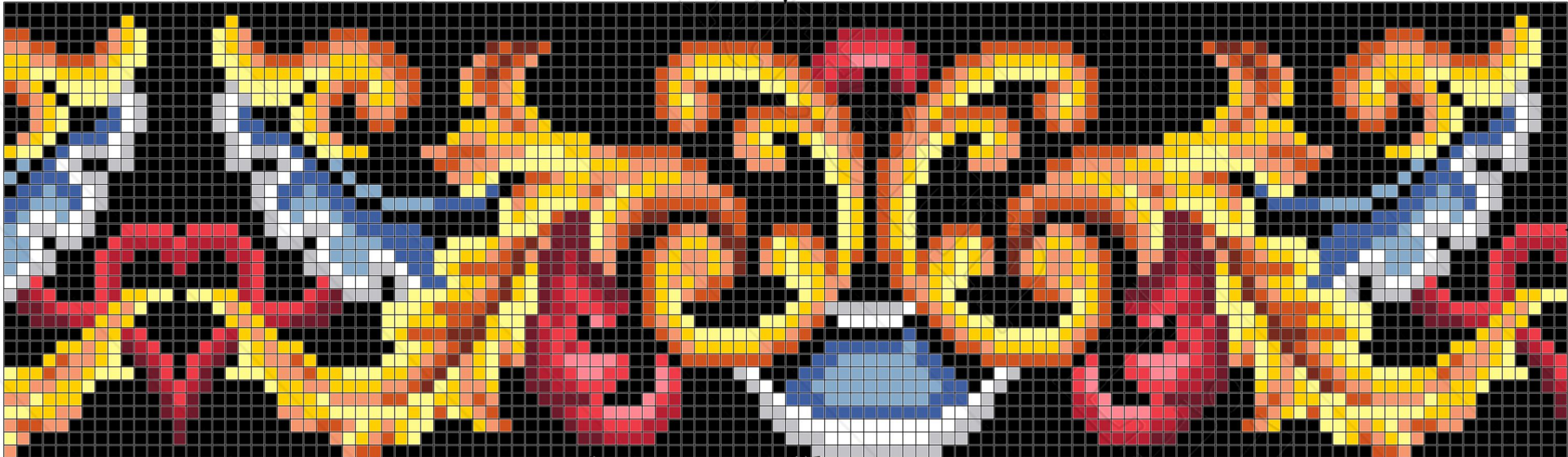
**Title:** A-MH048.26  
**Author:** Antique Pattern Library  
**Company:** New Media Arts, Inc.  
**Copyright:** Creative Commons 4.0 NC SA BY  
Free distribution only – NOT FOR SALE  
**Grid Size:** 145W x 145H  
**Design Area:** 26,31 cm x 26,31 cm (145 x 145 stitches)

**Legend: Stitches**

//	DMC Cotton 310	black
•	DMC Cotton White	white
⌘	DMC Cotton 367	pistachio green - dk
◆	DMC Cotton 798	delft blue - dk
×	DMC Cotton 666	christmas red - br
☼	DMC Cotton 444	lemon - dk

120

*Creative Commons 4.0 NC SA BY FREE DISTRIBUTION ONLY - NOT FOR SALE*

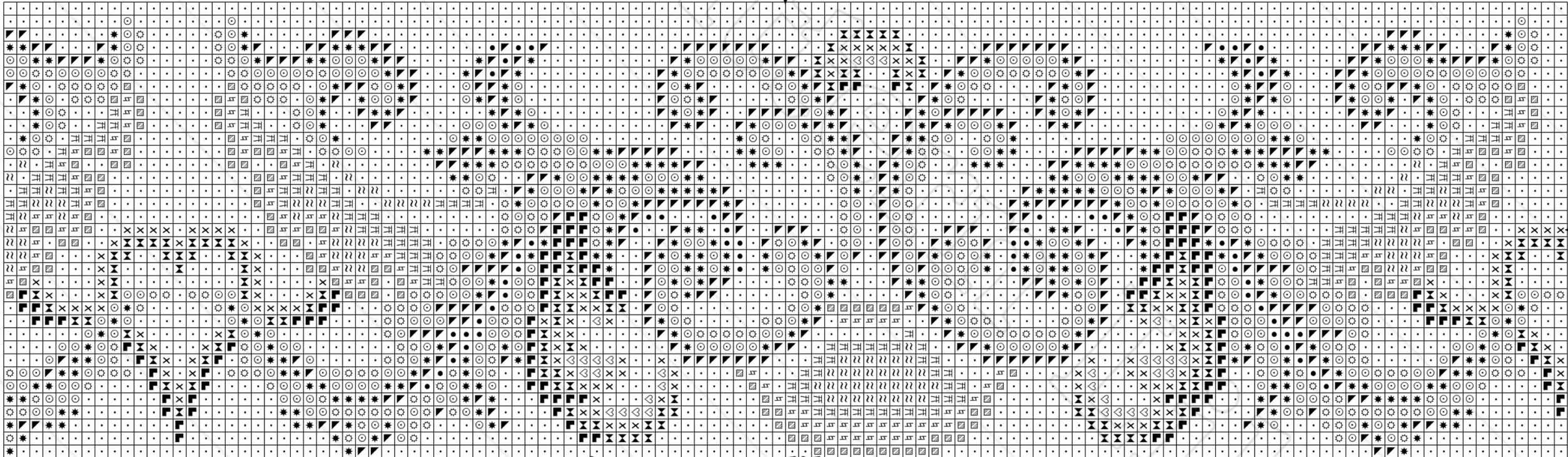


10

20

30

*www.antiquepatternlibrary.org 2026.05*



10

20

30

**Title:** A-MH048.27  
**Author:** Antique Pattern Library  
**Company:** New Media Arts, Inc.  
**Copyright:** Creative Commons 4.0 NC SA BY  
Free distribution only – NOT FOR SALE  
**Grid Size:** 35W x 120H  
**Design Area:** 6,35 cm x 21,77 cm (35 x 120 stitches)

### **Legend: Stitches**

•	DMC Cotton 310	black
⚡	DMC Cotton White	white
☀	DMC Cotton 445	lemon - lt
♥	DMC Cotton 3706	melon - md
⚡	DMC Cotton 798	delft blue - dk
≈	DMC Cotton 809	delft blue
×	DMC Cotton 3801	christmas red - lt
⚡	DMC Cotton 304	christmas red - md
▨	DMC Cotton 415	pearl gray
⊙	DMC Cotton 444	lemon - dk
★	DMC Cotton 722	orange spice - lt
▲	DMC Cotton 920	copper - md
◻	DMC Cotton 902	garnet - vy dk
●	DMC Cotton 3857	rosewood - dk

*Creative Commons 4.0 NC SA BY FREE DISTRIBUTION ONLY - NOT FOR SALE*

10

20

30

40

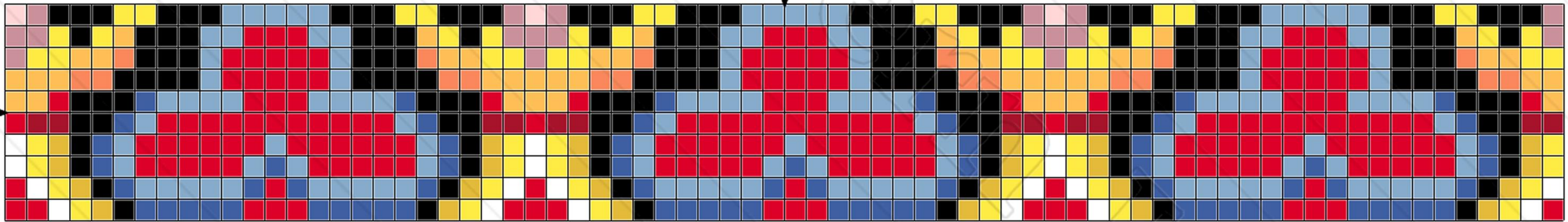
50

60

70



10



*www.antiquepatternlibrary.org 2026.05*



**Title:** A-MH048.28  
**Author:** Antique Pattern Library  
**Company:** New Media Arts, Inc.  
**Copyright:** Creative Commons 4.0 NC SA BY  
Free distribution only – NOT FOR SALE  
**Grid Size:** 72W x 10H  
**Design Area:** 13,06 cm x 1,81 cm (72 x 10 stitches)

### **Legend: Stitches**

■	DMC Cotton 310	black
•	DMC Cotton White	white
☼	DMC Cotton 307	lemon
✻	DMC Cotton 3340	apricot - md
♡	DMC Cotton 818	baby pink
⦶	DMC Cotton 798	delft blue - dk
≈	DMC Cotton 809	delft blue
×	DMC Cotton 666	christmas red - br
◐	DMC Cotton 498	christmas red - dk
◆	DMC Cotton 742	tangerine - lt
”	DMC Cotton 3820	straw - dk
✿	DMC Cotton 3727	antique mauve - lt